

PROJECT MANAGER -Christina Alexander (City of Fairfax) (703) 385-7810
SURVEYED BY, DATE -Timmons Group (804) 200-6500, 08/2020
DESIGN BY -Timmons Group (804) 200-6500
SUBSURFACE UTILITY BY, DATE -Timmons Group (804) 200-6500, 08/2020

FOR INDEX OF SHEETS SEE SHEET 1A

THIS PROJECT WAS DEVELOPED UTILIZING THE DEPARTMENT'S ENGINEERING DESIGN PACKAGE (OPENROADS DESIGNER).
COMPUTER IDENTIFICATION NO. 115545

RW PLANS

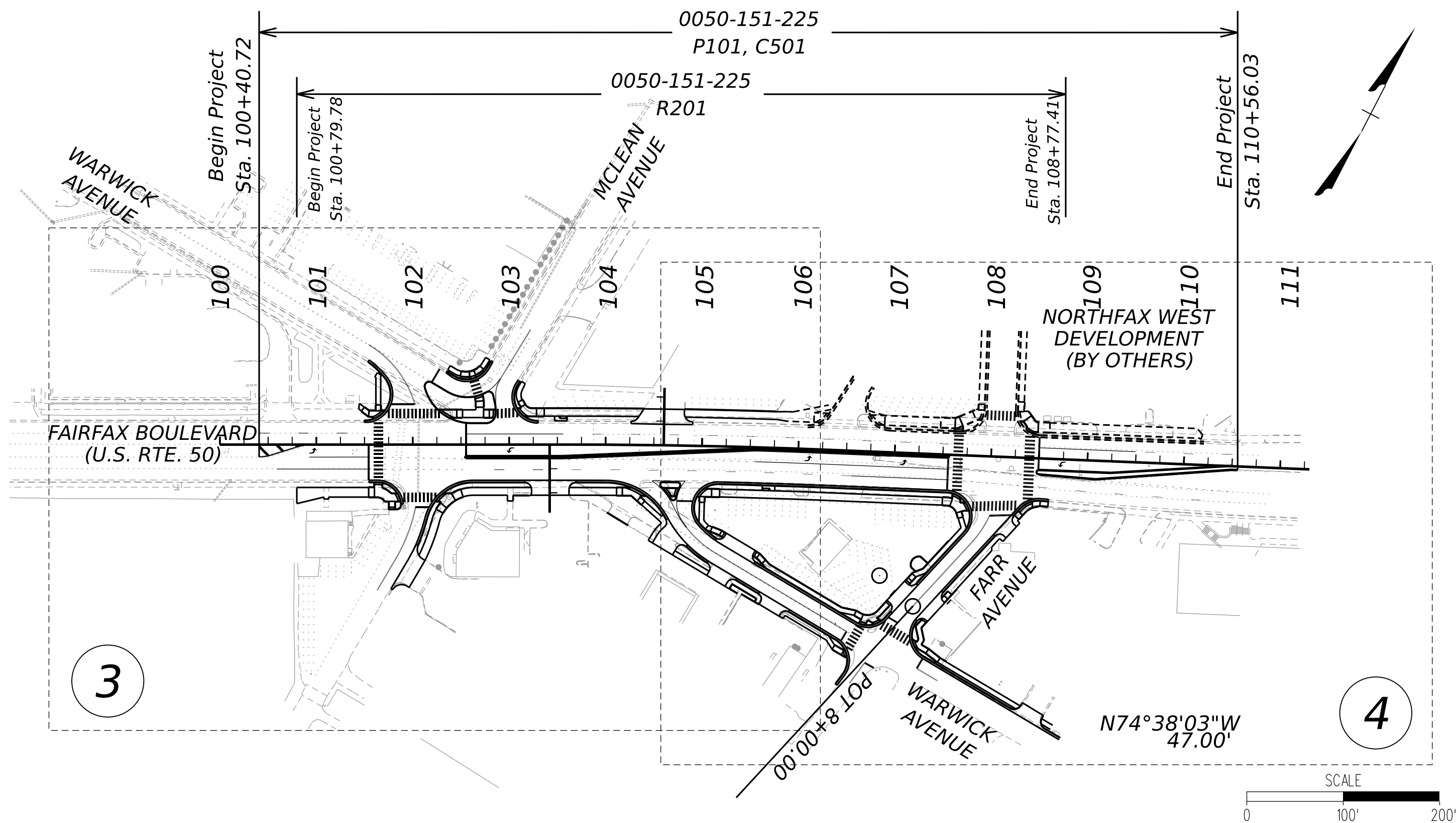
THESE PLANS ARE UNFINISHED AND UNAPPROVED AND ARE NOT TO BE USED FOR ANY TYPE OF CONSTRUCTION.

COMMONWEALTH OF VIRGINIA



PLAN AND PROFILE OF PROPOSED STATE HIGHWAY

CITY OF FAIRFAX, VIRGINIA
U.S. 50 - FAIRFAX BOULEVARD INTERSECTION IMPROVEMENTS
FROM: 0.039 MILES WEST OF WARWICK AVENUE
TO: 0.047 MILES EAST OF FARR AVENUE



THE COMPLETE ELECTRONIC PDF VERSION OF THE PLAN ASSEMBLY AS AWARDED, HAS BEEN SEALED AND SIGNED USING DIGITAL SIGNATURES AND THE OFFICIAL PLAN ASSEMBLY IN ELECTRONIC FORMAT IS STORED IN THE VDOT CENTRAL OFFICE PLAN LIBRARY, INCLUDING ALL SUBSEQUENT REVISIONS, WILL BE THE OFFICIAL CONSTRUCTION PLANS. FOR INFORMATION RELATIVE TO ELECTRONIC FILES AND LAYERED PLANS, SEE THE GENERAL NOTES.

DESIGN FEATURES RELATING TO CONSTRUCTION OR TO REGULATION AND CONTROL OF TRAFFIC MAY BE SUBJECT TO CHANGE AS DEEMED NECESSARY BY THE DEPARTMENT.

THIS PROJECT IS TO BE CONSTRUCTED IN ACCORDANCE WITH THE DEPARTMENT'S 2020 ROAD AND BRIDGE SPECIFICATIONS, 2016 ROAD AND BRIDGE STANDARDS, REVISED MAY 2020, 2009 MUTCD, 2011 VIRGINIA SUPPLEMENT TO THE MUTCD, 2011 VIRGINIA WORK AREA PROTECTION MANUAL - REVISION 2.1 AND AS AMENDED BY CONTRACT PROVISIONS AND THE COMPLETE ELECTRONIC PDF VERSION OF THE PLAN ASSEMBLY.

THE ORIGINAL APPROVED TITLE SHEET(S), INCLUDING ORIGINAL SIGNATURES, IS FILED IN THE VDOT CENTRAL OFFICE PLAN LIBRARY. ANY MISUSE OF ELECTRONIC FILES, INCLUDING SCANNED SIGNATURES, IS ILLEGAL AND ENFORCED TO THE FULL EXTENT OF THE LAW.

ALL EXISTING AND PROPOSED RIGHT-OF-WAY SHALL BE OWNED AND MAINTAINED BY THE CITY OF FAIRFAX. ALL PROPOSED IMPROVEMENTS SHALL BE OWNED AND MAINTAINED BY THE CITY OF FAIRFAX.

CONVENTIONAL SIGNS

STATE LINE	----	LEVEE OR EMBANKMENT	----
COUNTY LINE	----	BRIDGES	----
CITY, TOWN OR VILLAGE	----	CULVERTS	----
RIGHT OF WAY LINE	----	DROP INLET	----
FENCE LINE	x-----x	POWER POLES	o-----o
UNFENCED PROPERTY LINE	----	TELEPHONE OR TELEGRAPH POLES	o-----o
FENCED PROPERTY LINE	x-----x	TELEPHONE OR TELEGRAPH LINES	o-----o
WATER LINE	----	HEDGE	----
SANITARY SEWER LINE	----	TREES	----
GAS LINE	----	HEAVY WOODS	----
ELECTRIC UNDERGROUND CABLE	----	GROUND ELEVATION	----
TRAVELED WAY	----	GRADE ELEVATION	----
GUARD RAIL	----		
RETAINING WALL	----		
RAILROADS	----		
BASE OR SURVEY LINE	----		

City of Fairfax - Population 23,257 (2016 Census)

STATE PROJECT NO.	SECTION	FEDERAL AID PROJECT NO.	TYPE CODE	UPC NO.	LENGTH INCLUDING BRIDGE(S)		LENGTH EXCLUDING BRIDGE(S)		TYPE PROJECT	DESCRIPTION
					FEET	MILES	FEET	MILES		
0050-151-225	P101	NHPP-5B01(121)	PENG	115545	1,015.31	0.192	1,015.31	0.192	Prelim. Engr.	FR: 0.039 MILES WEST OF WARWICK AVENUE TO: 0.047 MILES EAST OF FARR AVENUE
	R201		ROWA	115545	797.63	0.151	797.63	0.151	ROW	FR: 0.032 MILES WEST OF WARWICK AVENUE TO: 0.010 MILES EAST OF FARR AVENUE
	C501		1000	115545	1,015.31	0.192	1,015.31	0.192	Constr.	FR: 0.039 MILES WEST OF WARWICK AVENUE TO: 0.047 MILES EAST OF FARR AVENUE

NOTE: PROJECT LENGTH BASED ON CONSTRUCTION BASELINE

FHWA-534-23104

STATE	FEDERAL AID		STATE		SHEET NO.
	PROJECT	ROUTE	PROJECT		
VA.	NHPP-5B01(121)	0050	0050-151-225		1

FUNCTIONAL CLASSIFICATION AND TRAFFIC DATA	
URBAN PRINCIPAL ARTERIAL (GS-5) - 35 MPH DESIGN SPEED - ROLLING	
	FR: 0.039 MI. WEST OF WARWICK AVENUE TO: 0.047 MI. EAST OF FARR AVENUE (FAIRFAX BOULEVARD)
ADT (2019)	37,000
ADT (2039)	45,150
DHV	3,750
D (%) (design hour)	54%
T (%) (design hour)	0%
V (MPH)	⊗

⊗ See Plan and Profile Sheets for horizontal and vertical curve design speed data
See Sheet 1A for functional classification and traffic data for side streets

TIER 1 PROJECT

LOCALLY ADMINISTERED PROJECTS	
City of Fairfax, VA	
NAME OF LOCALITY	
(SIGNATURE)	DAVID SUMMERS
DAVID SUMMERS	
RECOMMENDED FOR APPROVAL FOR RIGHT OF WAY ACQUISITION	
12/21/21	DIRECTOR, CITY OF FAIRFAX D.P.W.
DATE	TITLE OF POSITION
(SIGNATURE)	DAVID SUMMERS
RECOMMENDED FOR APPROVAL FOR CONSTRUCTION	
DIRECTOR, CITY OF FAIRFAX D.P.W.	
DATE	TITLE OF POSITION

RECOMMENDED FOR APPROVAL FOR RIGHT OF WAY ACQUISITION	
DATE	DISTRICT PLANNING AND INVESTMENT MANAGER
DATE	DISTRICT PROJECT DEVELOPMENT ENGINEER
APPROVED FOR RIGHT OF WAY ACQUISITION	
DATE	DISTRICT ENGINEER/ADMINISTRATOR

RECOMMENDED FOR APPROVAL FOR CONSTRUCTION	
DATE	DISTRICT PLANNING AND INVESTMENT MANAGER
DATE	DISTRICT PROJECT DEVELOPMENT ENGINEER
APPROVED FOR CONSTRUCTION	
DATE	DISTRICT ENGINEER/ADMINISTRATOR

Copyright 2020, Commonwealth of Virginia

PROJECT MANAGER _ _ CHRISTINA ALEXANDER (CITY PM) (703) 385-7810
SURVEYED BY, DATE _ _TIMMONS GROUP (804) 200-6500 8/2020 _ _ _ _ _
DESIGN BY _ _ _ _ _TIMMONS GROUP (804) 200-6500
SUBSURFACE UTILITY BY, DATE TIMMONS GROUP (804) 200-6500 8/2020

RW PLANS

THESE PLANS ARE UNFINISHED AND
UNAPPROVED AND ARE NOT TO BE
USED FOR ANY TYPE OF
CONSTRUCTION.

INDEX OF SHEETS

SHEET NO. 1	TITLE SHEET
SHEET NO. 1A	INDEX AND PROJECT LOCATION MAP
SHEET NO. 1B	RIGHT OF WAY DATA SHEET
SHEET NO. 1C	REVISION DATA SHEET
SHEET NO. 1D(1) - 1D(2)	SURVEY DATA SHEET
SHEET NO. 1E(1) - 1E(4)	ALIGNMENT DATA SHEET
SHEET NO. 1F(1) - 1F(3)	EXISTING CONDITIONS PLAN
SHEET NO. 1G(1) - 1G(2)	DEMOLITION PLAN
SHEET NO. 1H(1) - 1H(18)	TRAFFIC MANAGEMENT PLAN
SHEET NO. 1I	INTENTIONALLY OMITTED
SHEET NO. 1J	UNDERGROUND UTILITIES TEST HOLE INFORMATION
SHEET NO. 2	GENERAL NOTES
SHEET NO. 2A(1) - 2A(3)	TYPICAL SECTIONS
SHEET NO. 2B(1)	EROSION & SEDIMENT CONTROL NOTES
SHEET NO. 2B(2)	INTENTIONALLY OMITTED
SHEET NO. 2B(3) - 2B(4)	EROSION & SEDIMENT CONTROL PLANS
SHEET NO. 2C	ROADSIDE DEVELOPMENT SHEET
SHEET NO. 2D(3) - 2D(4)	EXISTING DRAINAGE AREA MAPS
SHEET NO. 2E(3) - 2E(4)	PROPOSED DRAINAGE AREA MAPS
SHEET NO. 3	PLAN SHEET
SHEET NO. 3A	PROFILE SHEET - FAIRFAX BOULEVARD
SHEET NO. 3B	PROFILE SHEET - WARWICK - MCLEAN
SHEET NO. 3C	PROFILE SHEET - MCLEAN NORTH
SHEET NO. 3RW	RIGHT OF WAY PLAN SHEET
SHEET NO. 4	PLAN SHEET
SHEET NO. 4A	PROFILE SHEET - FAIRFAX BOULEVARD
SHEET NO. 4B	PROFILE SHEET - WARWICK WEST
SHEET NO. 4C	PROFILE SHEET - WARWICK EAST
SHEET NO. 4D	PROFILE SHEET - FARR AVENUE
SHEET NO. 4RW	RIGHT OF WAY PLAN SHEET
SHEET NO. 5	ENTRANCE PROFILES
SHEET NO. 6	DRAINAGE DESCRIPTIONS
SHEET NO. 7	STORM SEWER PROFILES
SHEET NO. 8(1) - 8(6)	PERMANENT PAVEMENT MARKING & SIGNING SHEETS
SHEET NO. 9(1) - 9(3)	TREE INVENTORY PLAN
SHEET NO. 10(1)	LIGHTING NOTES & CALCULATIONS
SHEET NO. 10(2)	LIGHTING DETAILS
SHEET NO. 10(3) - 10(4)	LIGHTING PLANS
SHEET NO. 11(1)	TRAFFIC SIGNAL GENERAL NOTES
SHEET NO. 11(2)	TRAFFIC SIGNAL SUMMARY OF QUANTITIES
SHEET NO. 11(3) - 11(4)	TRAFFIC SIGNAL PLANS
SHEET NO. 11(5)	TRAFFIC SIGNAL OVERHEAD STREET NAME SIGN LAYOUTS
Total Cross Section Sheets: 18	
(See cross section sheet number 1 for Index of Cross Sections)	

*Indicates sheets intentionally omitted and to be provided with
future submittals.

FUNCTIONAL CLASSIFICATION AND TRAFFIC DATA		
URBAN MINOR COLLECTOR (GS-7) - 25 MPH DESIGN SPEED - ROLLING		
	FR: BURROWS AVENUE TO: FAIRFAX BOULEVARD	(WARWICK AVENUE)
ADT (2019)	2185	
ADT (2039)	2665	

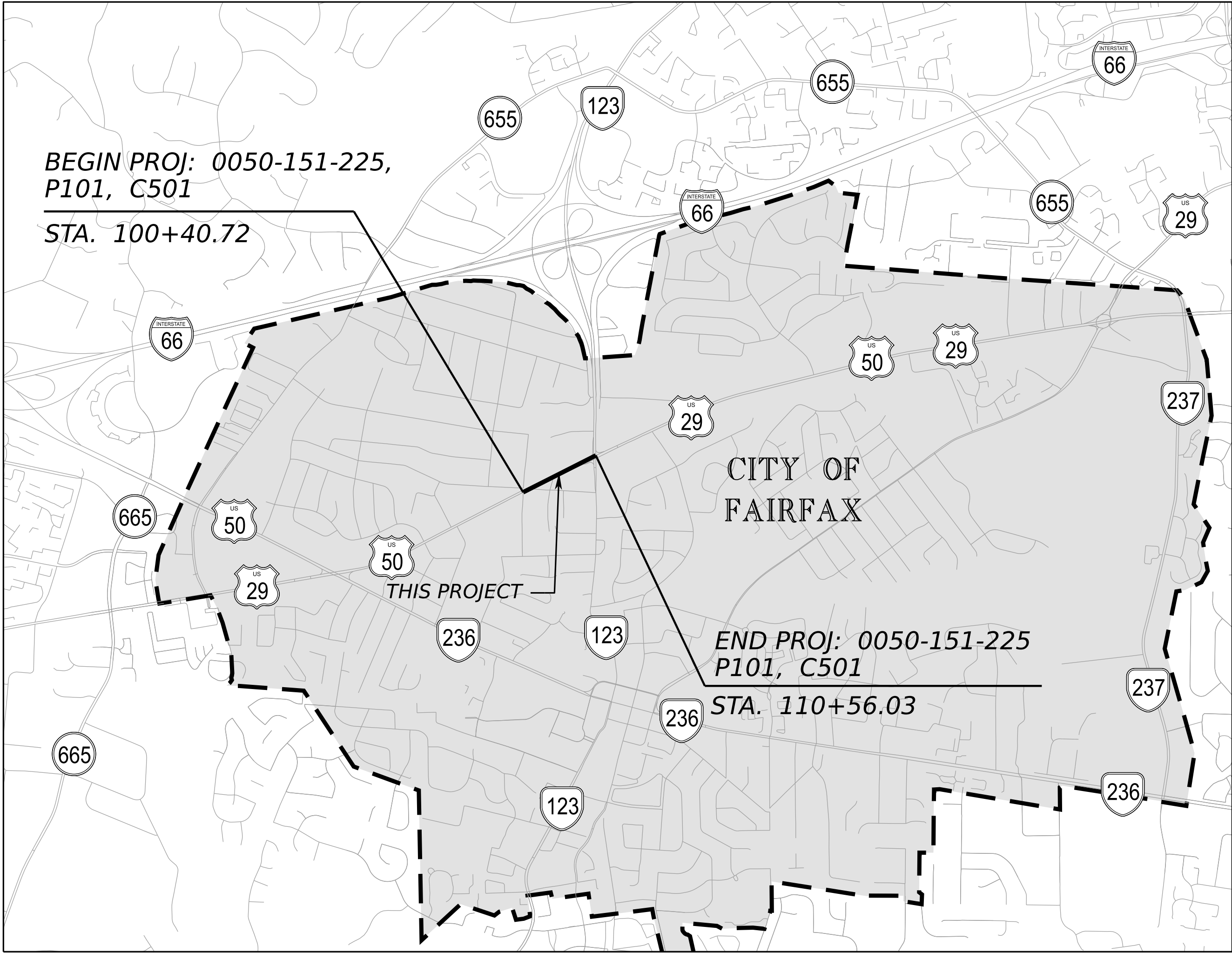
FUNCTIONAL CLASSIFICATION AND TRAFFIC DATA		
URBAN LOCAL STREET (GS-8) - 25 MPH DESIGN SPEED - ROLLING		
	FR: FAIRFAX BOULEVARD TO: HOWSEN AVENUE	(WARWICK AVENUE)
ADT (2019)	1345	
ADT (2039)	1640	

FUNCTIONAL CLASSIFICATION AND TRAFFIC DATA		
URBAN LOCAL STREET (GS-8) - 25 MPH DESIGN SPEED - ROLLING		
	FR: WARWICK AVENUE TO: FAIRFAX BOULEVARD	(FARR AVENUE)
ADT (2019)	545	
ADT (2039)	665	

FUNCTIONAL CLASSIFICATION AND TRAFFIC DATA		
URBAN MINOR COLLECTOR (GS-7) - 25 MPH DESIGN SPEED - ROLLING		
	FR: CEDAR AVENUE TO: FAIRFAX BOULEVARD	(MCLEAN AVENUE)
ADT (2019)	1010	
ADT (2039)	1235	

LOCATION MAP

CITY OF FAIRFAX, VIRGINIA
U.S. 50 - FAIRFAX BOULEVARD INTERSECTION IMPROVEMENTS
NOT TO SCALE



FUNCTIONAL CLASSIFICATION AND TRAFFIC DATA		
URBAN MINOR COLLECTOR (GS-7) - 25 MPH DESIGN SPEED		
	FR: FAIRFAX BOULEVARD TO: ORCHARD STREET	(MCLEAN AVENUE)
ADT (2019)	375	
ADT (2039)	460	

REVISED	STATE	ROUTE	STATE PROJECT	SHEET NO.
	VA.	050	0050-151-225 P101	1A

DESIGN FEATURES RELATING TO CONSTRUCTION
OR TO REGULATION AND CONTROL OF TRAFFIC
MAY BE SUBJECT TO CHANGE AS DEEMED
NECESSARY BY THE DEPARTMENT

NOT TO SCALE	PROJECT 0050-151-225	SHEET NO. 1A
--------------	-------------------------	-----------------

PROJECT MANAGER _ _ CHRISTINA ALEXANDER (CITY PM) (703) 385-7810
SURVEYED BY, DATE _ _ TIMMONS GROUP (804) 200-6500 8/2020 _ _ _ _ _
DESIGN BY _ _ _ _ _ TIMMONS GROUP (804) 200-6500
SUBSURFACE UTILITY BY, DATE TIMMONS GROUP (804) 200-6500 8/2020

RW PLANS

THESE PLANS ARE UNFINISHED AND UNAPPROVED AND ARE NOT TO BE USED FOR ANY TYPE OF CONSTRUCTION.

ADDITIONAL EASEMENTS FOR UTILITY RELOCATIONS MAY BE REQUIRED BEYOND THE PROPOSED RIGHT- OF-WAY SHOWN ON THESE PLANS.

REVISED	STATE	ROUTE	STATE PROJECT	SHEET NO.
	VA.	050	0050-151-225 R201	1B

DESIGN FEATURES RELATING TO CONSTRUCTION OR TO REGULATION AND CONTROL OF TRAFFIC MAY BE SUBJECT TO CHANGE AS DEEMED NECESSARY BY THE DEPARTMENT

PRELIMINARY RIGHT OF WAY DATA SHEET

PARCEL NO.	LANDOWNER	TAX PARCEL ID	SHEET NO.	AREA												
				TOTAL	FEE TAKING	PRESCRIPTIVE EASEMENTS	FEE REMAINDER	EASEMENTS								PROFFERS
								PERMANENT		UTILITY			TEMPORARY			
								SLOPE	DRAINAGE	DOMINION ENERGY	VERIZON	PUBLIC UTILITY	CONSTR.			
				ACRES	SQ FT	ACRES	ACRES	ACRES	ACRES	ACRES	ACRES	ACRES	SQ FT	YES/NO		
001	M SQUARED, LLC	57 1 02 110	03	1.191	-	-	1.191	-	-	-	-	-	340.42	-		
002	BRANCH AVENUE ASSOCIATES, LLC	57 2 02 006 (PARCEL 1)	03	1.860	505.94	-	1.848	-	-	-	-	-	958.71	-		
002	BRANCH AVENUE ASSOCIATES, LLC	57 2 02 006 (PARCEL 2)	03	0.481	837.68	-	0.462	-	-	-	-	-	1250.91	-		
002	BRANCH AVENUE ASSOCIATES, LLC	57 2 02 006 (D.B. Y-11)	03	1.774	835.59	-	1.755	-	-	-	-	-	1341.24	-		
003	SAGAAR LLC	57 2 02 083	03	0.296	1483.35	-	0.262	-	-	-	-	-	992.85	-		
004	MGB PROPERTIES II, LLC	57 2 02 082	03	0.817	2749.33	-	0.754	-	-	-	-	-	2452.15	-		
005	KBL, L. C.	57 2 02 081 57 2 02 079	03, 04	0.743	2716.02	-	0.681	-	-	-	-	-	2298.55	-		
006	NOT USED	-	-	-	-	-	-	-	-	-	-	-	-	-		
007	KBL, L. C.	57 2 02 078	03, 04	0.566	5489.32	-	0.440	-	-	-	-	-	5756.10	-		
008	SHOPS AT FAIRFAX, LLC	57 1 02 062 A	03	5.047	2542.56	-	4.989	-	-	-	-	-	197.49	-		
009	KBR FAIRFAX L.L.C.	57 2 02 077	04	0.287	1863.92	-	0.244	-	-	-	-	-	940.97	-		
010	ALPINE SCHUILING T., INC.	57 2 02 009	04	0.429	91.64	-	0.427	-	-	-	-	-	-	-		

DEMOLITION SUMMARY - FAIRFAX BOULEVARD IMPROVEMENTS					
SHEET NUMBER	PARCEL NUMBER	DEMOLITION NUMBER	LANDOWNER	ALIGNMENT & STATION	DESCRIPTION
3	002	D-1	BRANCH AVENUE ASSOCIATES, LLC	FAIRFAX BOULEVARD STA. 104+89 RT.	SITE LIGHT
3	002	D-2	BRANCH AVENUE ASSOCIATES, LLC	FAIRFAX BOULEVARD STA. 105.13 LT.	SITE LIGHT
3	002	D-3	BRANCH AVENUE ASSOCIATES, LLC	FAIRFAX BOULEVARD STA. 105+37 LT.	SITE LIGHT
3	002	D-4	BRANCH AVENUE ASSOCIATES, LLC	FAIRFAX BOULEVARD STA. 105+63 LT.	SITE LIGHT
3	003	D-5	SAGAAR LLC	FAIRFAX BOULEVARD STA. 101+70 RT.	BASKIN ROBBINS & CORNER COFFEE HOUSE SIGN
4	007	D-6	KBL, L.C.	WARWICK WEST STA. 32+72 LT.	SITE LIGHT
4	009	D-7	KBR FAIRFAX L.L.C.	WARWICK EAST STA. 40+50 LT.	DUMPSTER PAD AND ENCLOSURE
4	009	D-8	KBR FAIRFAX L.L.C.	FARR AVENUE 52+65 RT.	PRIVATE PARKING SIGNS

REVISION DATA SHEET

THESE PLANS ARE UNFINISHED AND
UNAPPROVED AND ARE NOT TO BE
USED FOR ANY TYPE OF
CONSTRUCTION.

REVISED	STATE	STATE		SHEET NO
		ROUTE	PROJECT	
	VA.	050	0050-151-225 P101	1C

DESIGN FEATURES RELATING TO CONSTRUCTION
OR TO REGULATION AND CONTROL OF TRAFFIC
MAY BE SUBJECT TO CHANGE AS DEEMED
NECESSARY BY THE DEPARTMENT

<i>NOT TO SCALE</i>	PROJECT <i>0050-151-225</i>	SHEET NO. <i>1C</i>
---------------------	--------------------------------	------------------------

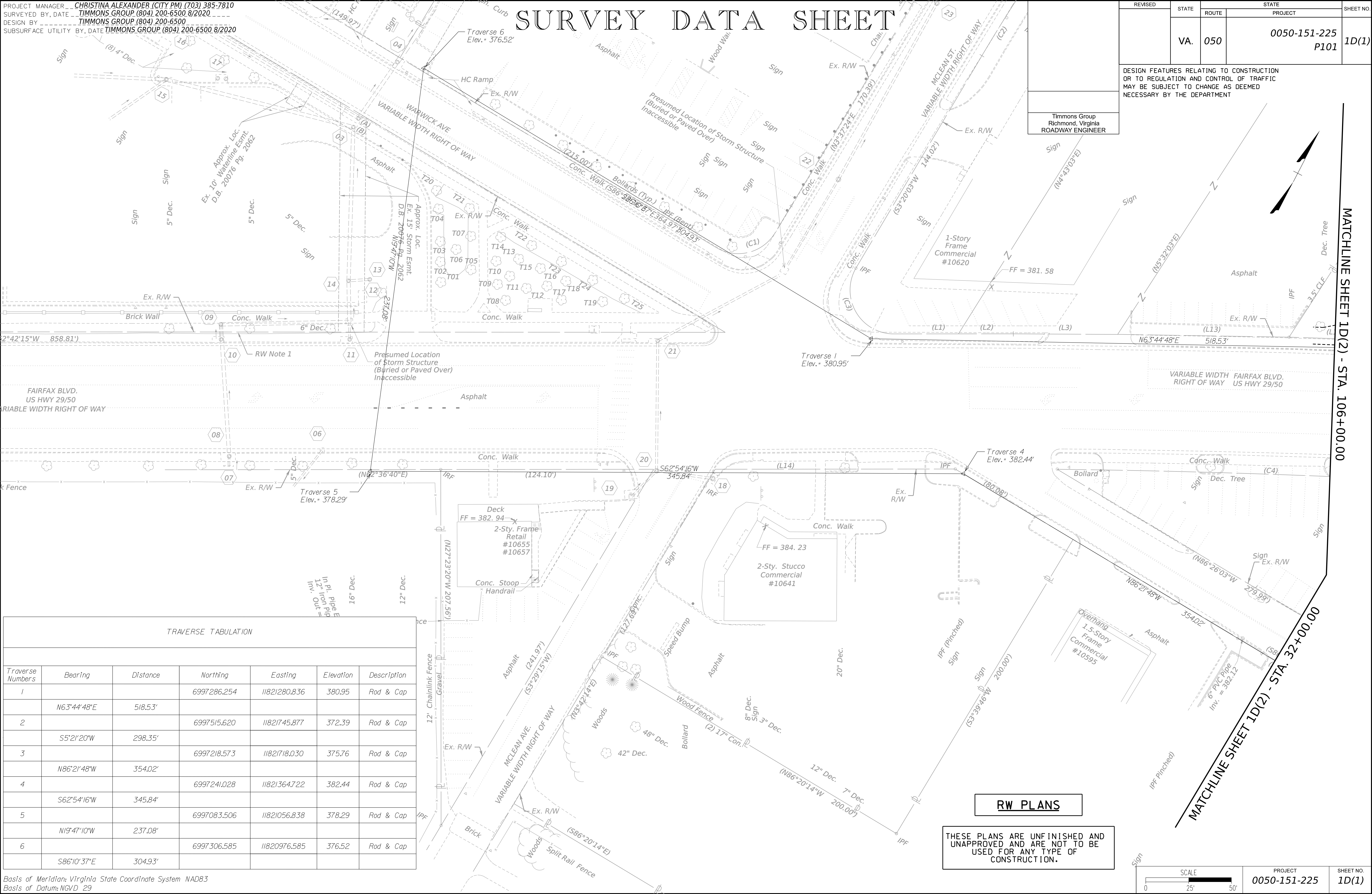
PROJECT MANAGER CHRISTINA ALEXANDER (CITY PM) (703) 385-7810
SURVEYED BY, DATE TIMMONS GROUP (804) 200-6500 8/2020
DESIGN BY TIMMONS GROUP (804) 200-6500
SUBSURFACE UTILITY BY, DATE TIMMONS GROUP (804) 200-6500 8/2020

SURVEY DATA SHEET

REVISED	STATE	ROUTE	STATE PROJECT	SHEET NO.
	VA.	050	0050-151-225 P101	

DESIGN FEATURES RELATING TO CONSTRUCTION
OR TO REGULATION AND CONTROL OF TRAFFIC
MAY BE SUBJECT TO CHANGE AS DEEMED
NECESSARY BY THE DEPARTMENT

Timmons Group
Richmond, Virginia
ROADWAY ENGINEER

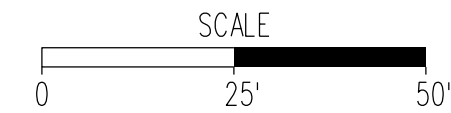


TRAVERSE TABULATION						
Traverse Numbers	Bearing	Distance	Northing	Easting	Elevation	Description
1	N63°44'48"E	518.53'	6997286.254	11821280.836	380.95	Rod & Cap
2	S5°21'20"W	298.35'	6997515.620	11821745.877	372.39	Rod & Cap
3	N86°21'48"W	354.02'	6997218.573	11821718.030	375.76	Rod & Cap
4	S62°54'16"W	345.84'	6997241.028	11821364.722	382.44	Rod & Cap
5	N19°47'10"W	237.08'	6997083.506	11821056.838	378.29	Rod & Cap
6	S86°10'37"E	304.93'	6997306.585	11820976.585	376.52	Rod & Cap

Basis of Meridian: Virginia State Coordinate System NAD83
Basis of Datum: NGVD 29

RW PLANS

THESE PLANS ARE UNFINISHED AND
UNAPPROVED AND ARE NOT TO BE
USED FOR ANY TYPE OF
CONSTRUCTION.



PROJECT
0050-151-225

SHEET NO.
1D(1)

PROJECT MANAGER _ CHRISTINA ALEXANDER (CITY PM) (703) 385-7810
SURVEYED BY, DATE _ TIMMONS GROUP (804) 200-6500 8/2020 _
DESIGN BY _ TIMMONS GROUP (804) 200-6500
SUBSURFACE UTILITY BY, DATE TIMMONS GROUP (804) 200-6500 8/2020

RW PLANS

THESE PLANS ARE UNFINISHED AND
UNAPPROVED AND ARE NOT TO BE
USED FOR ANY TYPE OF
CONSTRUCTION.

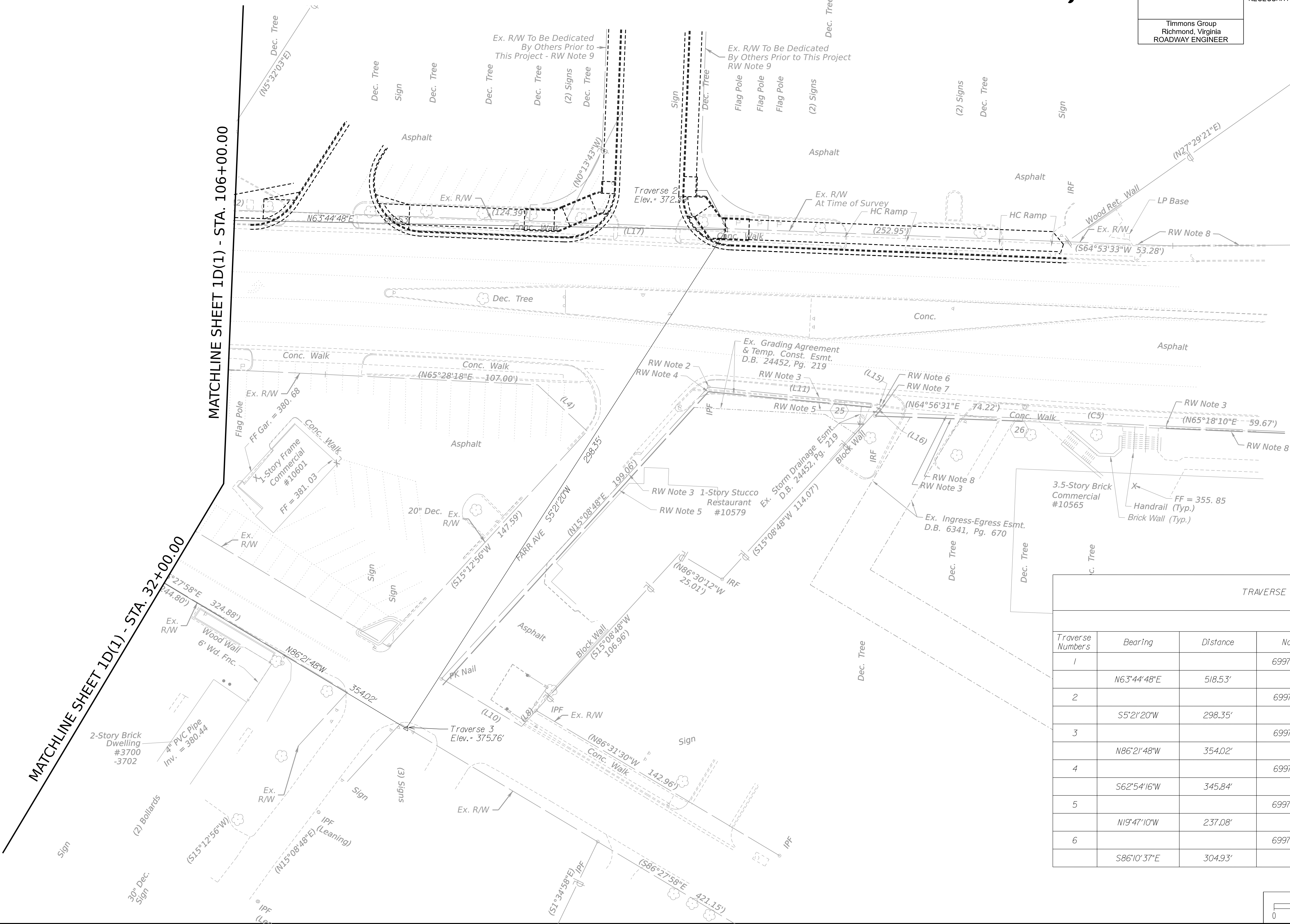
SURVEY DATA SHEET

REVISED	STATE	ROUTE	STATE PROJECT	SHEET NO.
	VA.	050	0050-151-225 P101	

DESIGN FEATURES RELATING TO CONSTRUCTION
OR TO REGULATION AND CONTROL OF TRAFFIC
MAY BE SUBJECT TO CHANGE AS DEEMED
NECESSARY BY THE DEPARTMENT

Timmons Group
Richmond, Virginia
ROADWAY ENGINEER

Approx. Parcel Line per 0029-151-105 Plans.
No Legal Reference For This Property.



TRAVERSE TABULATION						
Traverse Numbers	Bearing	Distance	Northing	EastIng	Elevation	Description
1	N63°44'48"E	518.53'	6997286.254	11821280.836	380.95	Rod & Cap
2	S5°21'20"W	298.35'	6997515.620	11821745.877	372.39	Rod & Cap
3	N86°21'48"W	354.02'	6997218.573	11821718.030	375.76	Rod & Cap
4	S62°54'16"W	345.84'	6997241.028	11821364.722	382.44	Rod & Cap
5	N19°47'10"W	237.08'	6997083.506	11821056.838	378.29	Rod & Cap
6	S86°10'37"E	304.93'	6997306.585	11820976.585	376.52	Rod & Cap

Basis of Meridian: Virginia State Coordinate System NAD83
Basis of Datum: NGVD 29

SCALE	PROJECT	SHEET NO.
0 25' 50'	0050-151-225	1D(2)

PROJECT MANAGER _ CHRISTINA ALEXANDER (CITY PM) (703) 385-7810
SURVEYED BY, DATE _ TIMMONS GROUP (804) 200-6500 8/2020 _
DESIGN BY _ TIMMONS GROUP (804) 200-6500
SUBSURFACE UTILITY BY, DATE TIMMONS GROUP (804) 200-6500 8/2020

RW PLANS

THESE PLANS ARE UNFINISHED AND
UNAPPROVED AND ARE NOT TO BE
USED FOR ANY TYPE OF
CONSTRUCTION.

HORIZONTAL ALIGNMENT DATA
SHEET

REVISED	STATE	ROUTE	STATE PROJECT	SHEET NO.
	VA.	050	0050-151-225 P101	

DESIGN FEATURES RELATING TO CONSTRUCTION
OR TO REGULATION AND CONTROL OF TRAFFIC
MAY BE SUBJECT TO CHANGE AS DEEMED
NECESSARY BY THE DEPARTMENT

Timmons Group
Richmond, Virginia
ROADWAY ENGINEER

BEGIN PROJECT 0050-151-225, R201
FAIRFAX BOULEVARD C
STA. 100+79.78

BEGIN CONSTRUCTION/BEGIN PROJECT
0050-151-225, P101, C501
FAIRFAX BOULEVARD C
STA. 100+40.72

END PROJECT
0050-151-225, R201
WARWICK - MCLEAN C
STA. 13+46.90

END CONSTRUCTION
WARWICK - MCLEAN C
STA. 13+56.95

MCLEAN NORTH
CONSTR. C

END CONSTRUCTION
MCLEAN NORTH C
STA. 21+29.20

P.O.T. STA. 104+61.81 FAIRFAX BOULEVARD
P.I. STA. 30+00.00 WARWICK WEST
 $\Delta = 90^{\circ}00'00.00''$

FAIRFAX BOULEVARD
CONSTR. C

MATCHLINE SHEET 1E(2) - STA. 106+00.00

CURVE NO. 1
PI = 11+59.16
DELTA = $30^{\circ}33'29.25''$ (LT)
D = $32^{\circ}44'26''$
T = 47.81'
L = 93.33'
R = 175.00'
PC = 11+11.36
PT = 12+04.69
e = N.C.
V = 20 MPH

CURVE NO. 2
PI = 13+07.14
DELTA = $59^{\circ}16'05.53''$ (LT)
D = $53^{\circ}32'51''$
T = 60.87'
L = 110.68'
R = 107.00'
PC = 12+46.27
PT = 13+56.95
e = N.C.
V = 20 MPH

CURVE NO. 3
PI = 20+60.47
DELTA = $31^{\circ}33'02.36''$ (RT)
D = $229^{\circ}10'59''$
T = 7.06'
L = 13.77'
R = 25.00'
PC = 20+53.40
PT = 20+67.17
e = N.C.
V = 20 MPH

P.O.T. 102+06.50 FAIRFAX BOULEVARD
P.O.T. 12+34.53 WARWICK - MCLEAN
 $\Delta = 90^{\circ}00'00''$

BEGIN CONSTRUCTION
WARWICK - MCLEAN C
STA. 10+73.91

CURVE NO. 4
PI = 104+97.23
DELTA = $02^{\circ}19'31.56''$ (RT)
D = $00^{\circ}52'53''$
T = 131.92'
L = 263.81'
R = 6,500.00'
PC = 103+65.30
PT = 106+29.11
e = N.C.
V = 35 MPH

CURVE NO. 5
PI = 30+79.85
DELTA = $60^{\circ}04'53.04''$ (LT)
D = $53^{\circ}32'51''$
T = 61.88'
L = 112.20'
R = 107.00'
PC = 30+17.97
PT = 31+30.17
e = N.C.
V = 20 MPH

CURVE NO. 6
PI = 4+21.16
DELTA = $22^{\circ}11'22.76''$ (LT)
D = $243^{\circ}48'43''$
T = 4.61'
L = 9.10'
R = 23.50'
PC = 4+16.55
PT = 4+25.65
e = N/A
V = N/A

P.O.T. STA. 102+86.11 FAIRFAX BOULEVARD
P.I. STA. 20+00.00 MCLEAN NORTH
 $\Delta = 90^{\circ}00'00.00''$ LT.

WARWICK WEST
CONSTR. C

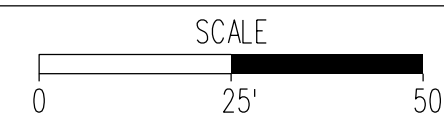
P.O.T. STA. 102+86.11 FAIRFAX BOULEVARD
P.I. STA. 20+00.00 MCLEAN NORTH
 $\Delta = 90^{\circ}00'00.00''$ LT.

POT 6+44.74

POT 5+40.29

ENTRANCE ALIGNMENT
TANGENT DATA TABLES

①	S86°46'33"E	50.47'	④A	S26°04'16"W	16.55'
②	S27°20'02"E	70.64'	④B	S03°52'54"W	15.13'
③	N26°29'48"W	59.49'	⑤	S03°33'00"W	40.29'
			⑥	N03°33'00"E	44.74'



PROJECT
0050-151-225

SHEET NO.
1E(1)

PROJECT MANAGER _ CHRISTINA ALEXANDER (CITY PM) (703) 385-7810
SURVEYED BY, DATE _ TIMMONS GROUP (804) 200-6500 8/2020 _
DESIGN BY _ TIMMONS GROUP (804) 200-6500
SUBSURFACE UTILITY BY, DATE TIMMONS GROUP (804) 200-6500 8/2020

RW PLANS

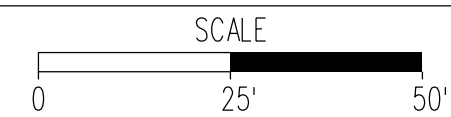
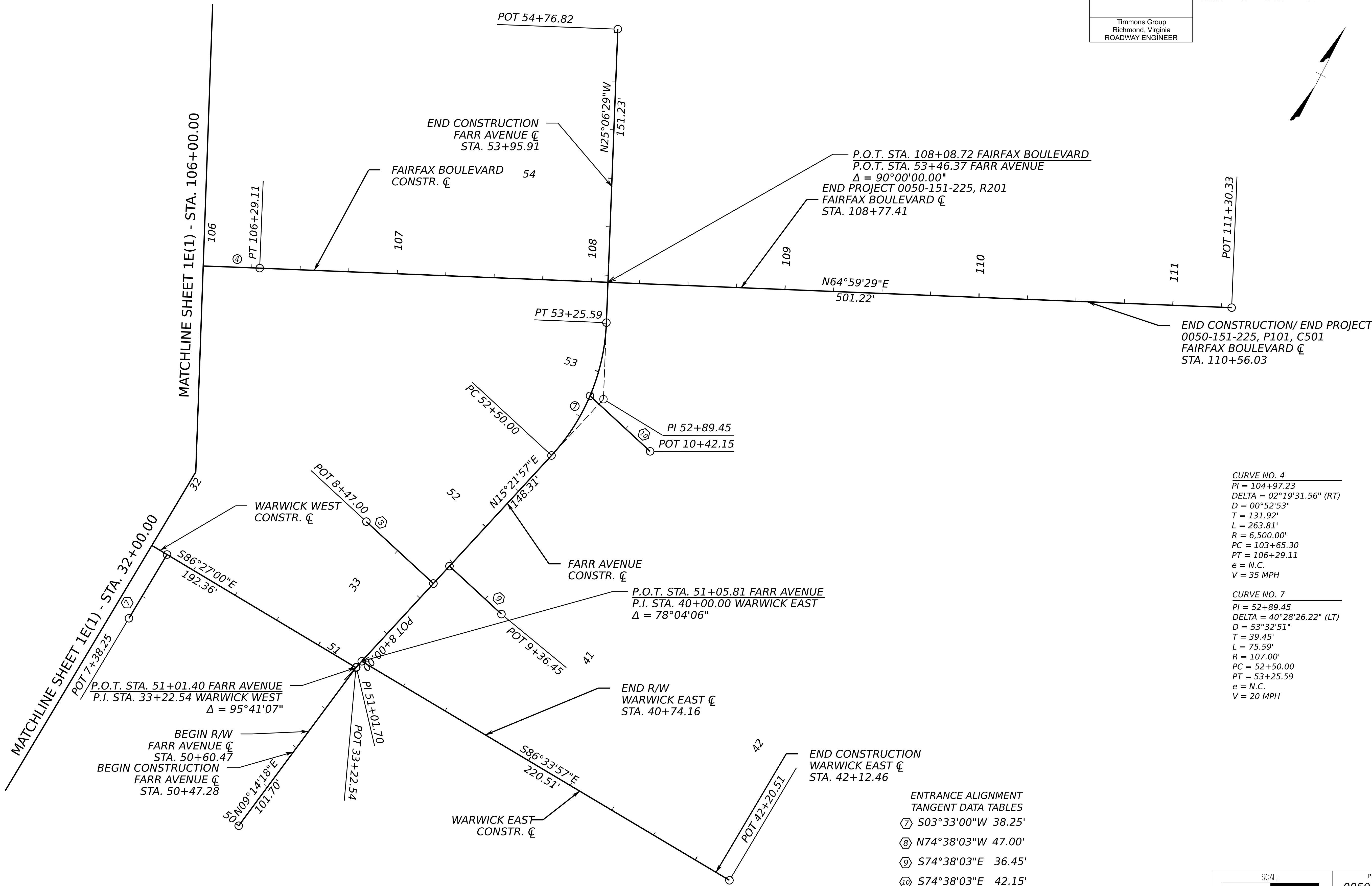
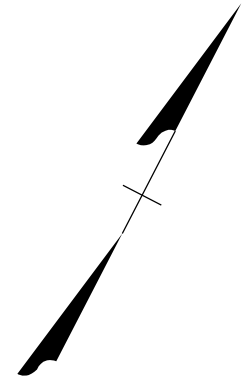
THESE PLANS ARE UNFINISHED AND
UNAPPROVED AND ARE NOT TO BE
USED FOR ANY TYPE OF
CONSTRUCTION.

HORIZONTAL ALIGNMENT DATA SHEET

REVISED	STATE	ROUTE	STATE PROJECT	SHEET NO.
	VA.	050	0050-151-225 P101	

DESIGN FEATURES RELATING TO CONSTRUCTION
OR TO REGULATION AND CONTROL OF TRAFFIC
MAY BE SUBJECT TO CHANGE AS DEEMED
NECESSARY BY THE DEPARTMENT

Timmons Group
Richmond, Virginia
ROADWAY ENGINEER



PROJECT
0050-151-225

SHEET NO.
1E(2)

PROJECT MANAGER _ _ CHRISTINA ALEXANDER (CITY PM) (703) 385-7810
SURVEYED BY, DATE _ _TIMMONS GROUP (804) 200-6500 8/2020 _ _ _ _ _
DESIGN BY _ _ _ _ _TIMMONS GROUP (804) 200-6500
SUBSURFACE UTILITY BY, DATE TIMMONS GROUP (804) 200-6500 8/2020

RW PLANS

HORIZONTAL ALIGNMENT DATA

THESE PLANS ARE UNFINISHED AND UNAPPROVED AND ARE NOT TO BE USED FOR ANY TYPE OF CONSTRUCTION.

* Alignment name: Fairfax Boulevard
* Alignment description:
* Alignment style: Alignment\DES_HOR_CL

	STATION	NORTHING	EASTING
Element: Linear			
START()	10000.000 R1	6997110.068	11820999.542
PC()	10365.303 R1	6997277.806	11821324.057
Tangential Direction:	N62.666°E		
Tangential Length:	365.303		
Element: Circular			
PC()	10365.303 R1	6997277.806	11821324.057
HPI()	10497.227 R1	6997338.383	11821441.251
CC()	6991503.563	11824308.702	
PT()	10629.115 R1	6997394.154	11821560.806
Radius:	6500.000		
Delta:	2.325°	Right	
Degree of Curvature(Arc):	0.881°		
Length:	263.812		
Tangent:	131.924		
Chord:	263.794		
Middle Ordinate:	1.338		
External:	1.339		
Tangent Direction:	N62.666°E		
Radial Direction:	S27.334°E		
Chord Direction:	N63.829°E		
Radial Direction:	S25.009°E		
Tangent Direction:	N64.991°E		
Element: Linear			
PT()	10629.115 R1	6997394.154	11821560.806
END()	11130.332 R1	6997606.045	11822015.032
Tangential Direction:	N64.991°E		
Tangential Length:	501.217		

* Alignment name: McLean - Warwick
* Alignment description:
* Alignment style: Alignment\DES_HOR_CL

	STATION	NORTHING	EASTING
Element: Linear			
START()	1000.000 R1	6996977.006	11821209.687
PC()	1111.358 R1	6997088.188	11821215.950
Tangential Direction:	N3.224°E		
Tangential Length:	111.358		
Element: Circular			
PC()	1111.358 R1	6997088.188	11821215.950
HPI()	1159.164 R1	6997135.918	11821218.638
CC()		6997098.031	11821041.227
PT()	1204.693 R1	6997178.387	11821196.687
Radius:	175.000		
Delta:	30.558°	Left	
Degree of Curvature(Arc):	32.740°		
Length:	93.334		
Tangent:	47.806		
Chord:	92.232		
Middle Ordinate:	6.186		
External:	6.412		
Tangent Direction:	N3.224°E		
Radial Direction:	S86.776°E		
Chord Direction:	N12.055°W		
Radial Direction:	N62.666°E		
Tangent Direction:	N27.334°W		
Element: Linear			
PT()	1204.693 R1	6997178.387	11821196.687
PC()	1250.253 R1	6997218.860	11821175.767
Tangential Direction:	N27.334°W		
Tangential Length:	45.561		
Element: Circular			
PC()	1250.253 R1	6997218.860	11821175.767
HPI()	1307.140 R1	6997269.395	11821149.646
CC()		6997172.942	11821086.932
PT()	1353.696 R1	6997272.767	11821092.859
Radius:	100.000		
Delta:	59.268°	Left	
Degree of Curvature(Arc):	57.296°		
Length:	103.443		
Tangent:	56.887		
Chord:	98.892		
Middle Ordinate:	13.080		
External:	15.048		
Tangent Direction:	N27.334°W		
Radial Direction:	N62.666°E		
Chord Direction:	N56.968°W		
Radial Direction:	N3.398°E		
Tangent Direction:	N86.602°W		
Element: Linear			
PT()	1353.696 R1	6997272.767	11821092.859
END()	1418.813 R1	6997276.626	11821027.857
Tangential Direction:	N86.602°W		
Tangential Length:	65.117		

* Alignment name: McLean North
* Alignment description:
* Alignment style: Alignment\DES_HOR_CL

	STATION	NORTHING	EASTING
Element: Linear			
START()	2000.000 R1	6997241.443	11821253.707
PC()	2048.317 R1	6997284.366	11821231.521
Tangential Direction:	N27.334°W		
Tangential Length:	48.317		
Element: Circular			
PC()	2048.317 R1	6997284.366	11821231.521
HPI()	2060.465 R1	6997295.157	11821225.943
CC()		6997304.110	11821269.720
PT()	2071.996 R1	6997307.272	11821226.836
Radius:	43.000		
Delta:	31.551°	Right	
Degree of Curvature(Arc):	133.246°		
Length:	23.679		
Tangent:	12.148		
Chord:	23.380		
Middle Ordinate:	1.620		
External:	1.683		
Tangent Direction:	N27.334°W		
Radial Direction:	N62.666°E		
Chord Direction:	N11.559°W		
Radial Direction:	S85.783°E		
Tangent Direction:	N4.217°E		
Element: Linear			
PT()	2071.996 R1	6997307.272	11821226.836
END()	2175.526 R1	6997410.522	11821234.449
Tangential Direction:	N4.217°E		
Tangential Length:	103.530		

* Alignment name: Warwick - West
* Alignment description:
* Alignment style: Alignment\DES_HOR_CL

	STATION	NORTHING	EASTING
Element: Linear			
START()	3000.000 R1	6997327.269	11821421.760
PC()	3052.140 R1	6997280.554	11821444.917
Tangential Direction:	S26.369°E		
Tangential Length:	52.140		
Element: Circular			
PC()	3052.140 R1	6997280.554	11821444.917
HPI()	3071.779 R1	6997262.958	11821453.640
CC()		6997304.982	11821494.195
PCC()	3089.866 R1	6997254.867	11821471.535
Radius:	55.000		
Delta:	39.301°	Left	
Degree of Curvature(Arc):	104.174°		
Length:	37.727		
Tangent:	19.639		
Chord:	36.991		
Middle Ordinate:	3.203		
External:	3.401		
Tangent Direction:	S26.369°E		
Radial Direction:	S63.631°W		
Chord Direction:	S46.019°E		
Radial Direction:	S24.330°W		
Tangent Direction:	S65.670°E		
Element: Circular			
PCC()	3089.866 R1	6997254.867	11821471.535
HPI()	3107.815 R1	6997247.473	11821487.890
CC()		6997345.986	11821512.735
PT()	3125.385 R1	6997246.227	11821505.795
Radius:	100.000		
Delta:	20.350°	Left	
Degree of Curvature(Arc):	57.296°		
Length:	35.518		
Tangent:	17.948		
Chord:	35.332		
Middle Ordinate:	1.573		
External:	1.598		
Tangent Direction:	S65.670°E		
Radial Direction:	S24.330°W		
Chord Direction:	S75.845°E		
Radial Direction:	S3.980°W		
Tangent Direction:	S86.020°E		
Element: Linear			
PT()	3125.385 R1	6997246.227	11821505.795
END()	3319.295 R1	6997234.210	11821699.332
Tangential Direction:	S86.447°E		
Tangential Length:	193.910		

* Alignment name: Warwick - East
* Alignment description:
* Alignment style: Alignment\DES_HOR_CL

	STATION	NORTHING	EASTING
Element: Linear			
START()	4000.000 R1	6997238.470	11821700.470
END()	4220.505 R1	6997225.262	11821920.579
Tangential Direction:	S86.566°E		
Tangential Length:	220.505		

* Alignment name: Farr Avenue
* Alignment description:
* Alignment style: Alignment\DES_HOR_CL

	STATION	NORTHING	EASTING
Element: Linear			
START()	5000.000 R1	6997134.125	11821683.053
HPI()	5101.695 R1	6997234.501	11821699.379
Tangential Direction:	N9.238°E		
Tangential Length:	101.695		
Element: Linear			
HPI()	5101.695 R1	6997234.501	11821699.379
PC()	5252.979 R1	6997380.377	11821739.466
Tangential Direction:	N15.366°E		
Tangential Length:	151.284		
Element: Circular			
PC()	5252.979 R1	6997380.377	11821739.466
HPI()	5289.845 R1	6997415.925	11821749.235
CC()		6997406.875	11821643.041
PT()	5323.619 R1	6997449.308	11821733.592
Radius:	100.000		
Delta:	40.474°	Left	
Degree of Curvature(Arc):	57.296°		
Length:	70.640		
Tangent:	36.866		
Chord:	69.181		
Middle Ordinate:	6.173		
External:	6.579		
Tangent Direction:	N15.366°E		
Radial Direction:	S74.634°E		
Chord Direction:	N4.871°W		
Radial Direction:	N64.892°E		
Tangent Direction:	N25.108°W		
Element: Linear			
PT()	5323.619 R1	6997449.308	11821733.592
END()	5477.133 R1	6997588.315	11821668.451
Tangential Direction:	N25.108°W		
Tangential Length:	153.513		

NOT TO SCALE

PROJECT
0050-151-225

SHEET NO.
1E(3)

PROJECT MANAGER _ _ CHRISTINA ALEXANDER (CITY PM) (703) 385-7810
SURVEYED BY, DATE _ _ TIMMONS GROUP (804) 200-6500 8/2020 _ _ _ _
DESIGN BY _ _ _ _ _ TIMMONS GROUP (804) 200-6500
SUBSURFACE UTILITY BY, DATE TIMMONS GROUP (804) 200-6500 8/2020

RW PLANS

THESE PLANS ARE UNFINISHED AND
UNAPPROVED AND ARE NOT TO BE
USED FOR ANY TYPE OF
CONSTRUCTION.

HORIZONTAL ALIGNMENT DATA

REVISED	STATE	ROUTE	STATE PROJECT	SHEET NO.
	VA.	050	0050-151-225 P101	

DESIGN FEATURES RELATING TO CONSTRUCTION
OR TO REGULATION AND CONTROL OF TRAFFIC
MAY BE SUBJECT TO CHANGE AS DEEMED
NECESSARY BY THE DEPARTMENT

Timmons Group
Richmond, Virginia
ROADWAY ENGINEER

* Alignment name: Entr. #1
* Alignment description:
* Alignment style: Alignment\DES_HOR_CL
*

Element: Linear	STATION	NORTHING	EASTING
START()	100.000 R1	6997086.255	11821215.841
END()	150.468 R1	6997083.417	11821266.229
Tangential Direction:	S86.776°E		
Tangential Length:	50.468		

* Alignment name: Entr. #2
* Alignment description:
* Alignment style: Alignment\DES_HOR_CL
*

Element: Linear	STATION	NORTHING	EASTING
START()	200.000 R1	6997267.101	11821303.346
END()	270.637 R1	6997204.351	11821335.780
Tangential Direction:	S27.334°E		
Tangential Length:	70.637		

* Alignment name: Entr. #3
* Alignment description:
* Alignment style: Alignment\DES_HOR_CL
*

Element: Linear	STATION	NORTHING	EASTING
START()	300.000 R1	6997320.804	11821408.753
END()	359.489 R1	6997374.044	11821382.212
Tangential Direction:	N26.497°W		
Tangential Length:	59.489		

* Alignment name: Entr. #4
* Alignment description:
* Alignment style: Alignment\DES_HOR_CL
*

Element: Linear	STATION	NORTHING	EASTING
START()	400.000 R1	6997256.805	11821466.936
PC()	416.549 R1	6997241.940	11821459.663
Tangential Direction:	S26.071°W		
Tangential Length:	16.549		

Element: Circular			
PC(AL-4)	416.549 R1	6997241.940	11821459.663
HPI()	421.157 R1	6997237.800	11821457.638
CC()	6997231.612	11821480.772	
PT()	425.650 R1	6997233.202	11821457.326
Radius:	23.500		
Delta:	22.190°		
Degree of Curvature(Arc):	243.812°		Left
Length:	9.101		
Tangent:	4.608		
Chord:	9.044		
Middle Ordinate:	0.439		
External:	0.448		
Tangent Direction:	S26.071°W		
Radial Direction:	N63.929°W		
Chord Direction:	S14.976°W		
Radial Direction:	N86.118°W		
Tangent Direction:	S3.882°W		

Element: Linear			
PT()	425.650 R1	6997233.202	11821457.326
END()	440.782 R1	6997218.105	11821456.302
Tangential Direction:	S3.882°W		
Tangential Length:	15.132		

* Alignment name: Entr. #5
* Alignment description:
* Alignment style: Alignment\DES_HOR_CL
*

Element: Linear	STATION	NORTHING	EASTING
START()	500.000 R1	6997245.163	11821522.803
END()	540.291 R1	6997204.949	11821520.308
Tangential Direction:	S3.550°W		
Tangential Length:	40.291		

* Alignment name: Entr. #6
* Alignment description:
* Alignment style: Alignment\DES_HOR_CL
*

Element: Linear	STATION	NORTHING	EASTING
START()	600.000 R1	6997245.064	11821524.408
END()	644.737 R1	6997289.715	11821527.178
Tangential Direction:	N3.550°E		
Tangential Length:	44.737		

* Alignment name: Entr. #7
* Alignment description:
* Alignment style: Alignment\DES_HOR_CL
*

Element: Linear	STATION	NORTHING	EASTING
START()	700.000 R1	6997241.234	11821586.128
END()	738.250 R1	6997203.058	11821583.759
Tangential Direction:	S3.550°W		
Tangential Length:	38.250		

* Alignment name: Entr. #8
* Alignment description:
* Alignment style: Alignment\DES_HOR_CL
*

Element: Linear	STATION	NORTHING	EASTING
START()	800.000 R1	6997290.985	11821714.901
END()	847.000 R1	6997303.439	11821669.581
Tangential Direction:	N74.634°W		
Tangential Length:	47.000		

* Alignment name: Entr. #9
* Alignment description:
* Alignment style: Alignment\DES_HOR_CL
*

Element: Linear	STATION	NORTHING	EASTING
START()	900.000 R1	6997302.750	11821718.134
END()	936.451 R1	6997293.092	11821753.282
Tangential Direction:	S74.634°E		
Tangential Length:	36.451		

* Alignment name: Entr. #10
* Alignment description:
* Alignment style: Alignment\DES_HOR_CL
*

Element: Linear	STATION	NORTHING	EASTING
START()	1000.000 R1	6997413.887	11821742.202
END()	1042.148 R1	6997402.719	11821782.843
Tangential Direction:	S74.634°E		
Tangential Length:	42.148		

NOT TO SCALE

PROJECT
0050-151-225

SHEET NO.
1E(4)

PROJECT MANAGER CHRISTINA ALEXANDER (CITY PM) (703) 385-7810
SURVEYED BY, DATE TIMMONS GROUP (804) 200-6500 8/2020
DESIGN BY TIMMONS GROUP (804) 200-6500
SUBSURFACE UTILITY BY, DATE TIMMONS GROUP (804) 200-6500 8/2020

RW PLANS

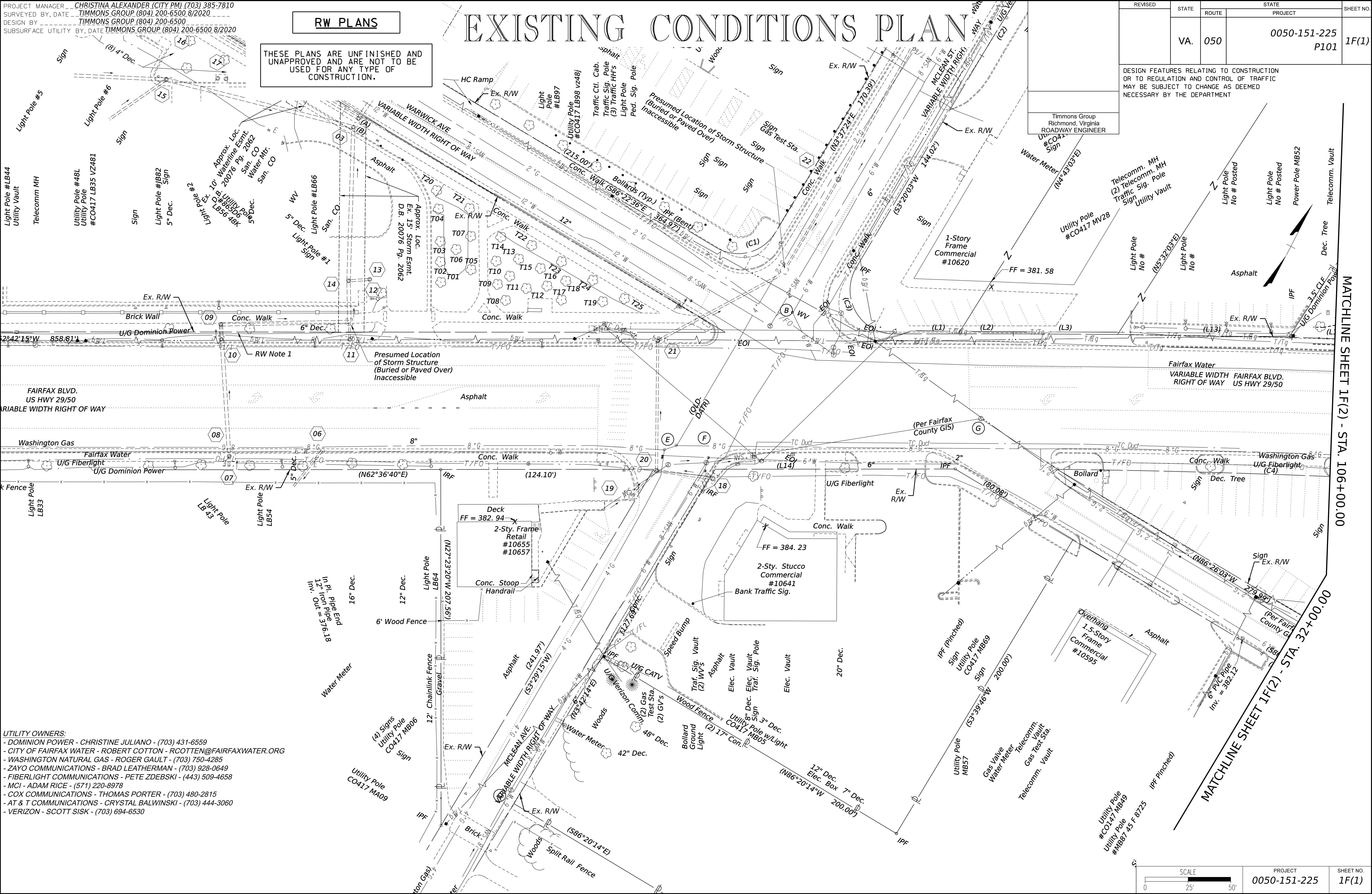
THESE PLANS ARE UNFINISHED AND UNAPPROVED AND ARE NOT TO BE USED FOR ANY TYPE OF CONSTRUCTION.

EXISTING CONDITIONS PLAN

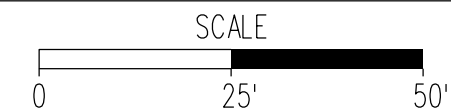
REVISED	STATE	ROUTE	STATE	PROJECT	SHEET NO.
	VA.	050		0050-151-225 P101	

DESIGN FEATURES RELATING TO CONSTRUCTION OR TO REGULATION AND CONTROL OF TRAFFIC MAY BE SUBJECT TO CHANGE AS DEEMED NECESSARY BY THE DEPARTMENT

Timmons Group
Richmond, Virginia
ROADWAY ENGINEER



UTILITY OWNERS:
- DOMINION POWER - CHRISTINE JULIANO - (703) 431-6559
- CITY OF FAIRFAX WATER - ROBERT COTTON - RCOTTEN@FAIRFAXWATER.ORG
- WASHINGTON NATURAL GAS - ROGER GAULT - (703) 750-4285
- ZAYO COMMUNICATIONS - BRAD LEATHERMAN - (703) 928-0649
- FIBERLIGHT COMMUNICATIONS - PETE ZDEBSKI - (443) 509-4658
- MCI - ADAM RICE - (571) 220-8978
- COX COMMUNICATIONS - THOMAS PORTER - (703) 480-2815
- AT & T COMMUNICATIONS - CRYSTAL BALWINSKI - (703) 444-3060
- VERIZON - SCOTT SISK - (703) 694-6530



PROJECT
0050-151-225

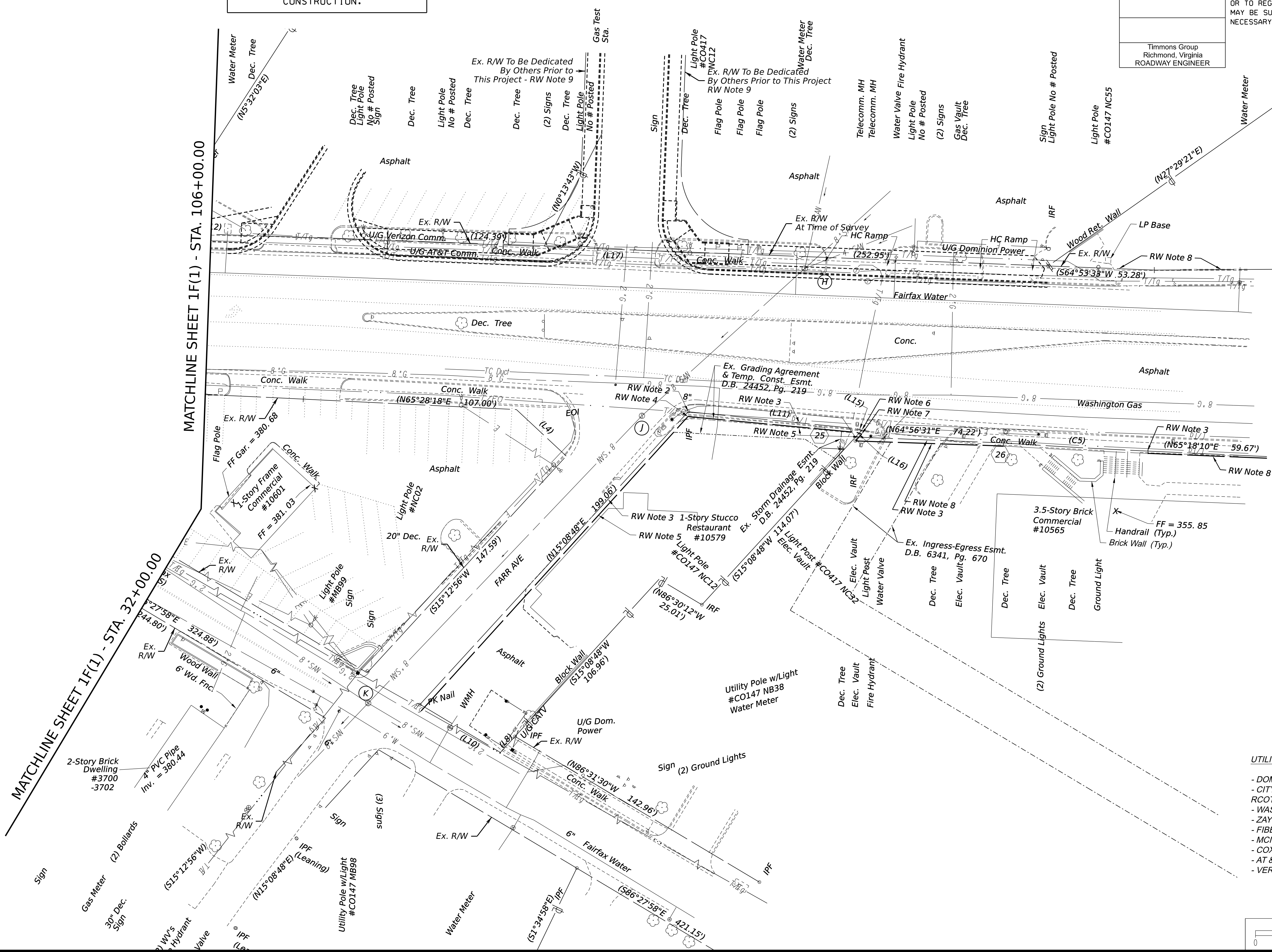
SHEET NO.
1F(1)

EXISTING CONDITIONS PLAN

REVISED	STATE	STATE		SHEET NO.
		ROUTE	PROJECT	
	VA.	050	0050-151-225 P101	1F(2)

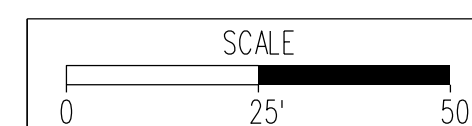
Timmons Group
Richmond, Virginia
ROADWAY ENGINEER

1-105 Plans.
ty.



UTILITY OWNERS:

- DOMINION POWER - CHRISTINE JULIANO - (703) 431-6559
- CITY OF FAIRFAX WATER - ROBERT COTTON -
RCOTTEN@FAIRFAXWATER.ORG
- WASHINGTON NATURAL GAS - ROGER GAULT - (703) 750-4285
- ZAYO COMMUNICATIONS - BRAD LEATHERMAN - (703) 928-0649
- FIBERLIGHT COMMUNICATIONS - PETE ZDEBSKI - (443) 509-4658
- MCI - ADAM RICE - (571) 220-8978
- COX COMMUNICATIONS - THOMAS PORTER - (703) 480-2815
- AT & T COMMUNICATIONS - CRYSTAL BALWINSKI - (703) 444-3060
- VERIZON - SCOTT SISK - (703) 694-6530



PROJECT
0050-151-225

SHEET NO.
1F(2)

<i>NOT TO SCALE</i>	PROJECT <i>0050-151-225</i>	SHEET NO. <i>1F(3)</i>
---------------------	--------------------------------	---------------------------

PROJECT MANAGER CHRISTINA ALEXANDER (CITY PM) (703) 385-7810
SURVEYED BY, DATE TIMMONS GROUP (804) 200-6500 8/2020
DESIGN BY TIMMONS GROUP (804) 200-6500
SUBSURFACE UTILITY BY, DATE TIMMONS GROUP (804) 200-6500 8/2020

RW PLANS

THESE PLANS ARE UNFINISHED AND
UNAPPROVED AND ARE NOT TO BE
USED FOR ANY TYPE OF
CONSTRUCTION.

DEMOLITION PLAN

REVISED	STATE	ROUTE	STATE	PROJECT	SHEET NO.
	VA.	050		0050-151-225 P101	

DESIGN FEATURES RELATING TO CONSTRUCTION
OR TO REGULATION AND CONTROL OF TRAFFIC
MAY BE SUBJECT TO CHANGE AS DEEMED
NECESSARY BY THE DEPARTMENT

Timmons Group
Richmond, Virginia
ROADWAY ENGINEER

**BRANCH AVENUE
ASSOCIATES, LLC**
D.B. 14796, PG. 1326, PARCEL 2
PIN 57 2 02 006
0.481 Ac. (FROM RECORD)

**BRANCH AVENUE
ASSOCIATES, LLC**
D.B. Y-11, PG. 497
PIN 57 2 02 006
1.774 Ac. (FROM RECORD)

BRANCH AVENUE ASSOCIATES, LLC
D.B. 14796, PG. 1326, PARCEL 1
PIN 57 2 02 006
1.860 Ac. (FROM RECORD)

SHOPS AT FAIRFAX, LLC
D.B. 23999, PG. 378
PIN 57 1 02 062 A
5.047 Ac.

CATHOLIC DIOCESE OF ARLINGTON
D.B. 5784, PG. 1821
PIN 57 1 02 112
16.099 Ac.

KBL, L. C.
D.B. 10998, PG. 746
PIN 57 2 02 078
0.566 Ac.

MGB PROPERTIES II, LLC
D.B. 16570, PG. 282
PIN 57 2 02 082
0.817 Ac.

KBL, L. C.
D.B. 10998, PG. 746
PIN 57 2 02 081
PIN 57 2 02 079
0.743 Ac.

SAGAAR LLC
D.B. 25200, PG. 2180
PIN 57 2 02 083
0.296 Ac.

ADAM D. DULL AND STEPHANIE A. DULL
D.B. 25077, PG. 267
PIN 57 2 02 088
0.459 Ac.

UTILITY OWNERS:
- DOMINION POWER - CHRISTINE JULIANO - (703) 431-6559
- CITY OF FAIRFAX WATER - ROBERT COTTON - RCOTTON@FAIRFAXWATER.ORG
- WASHINGTON NATURAL GAS - ROGER GAULT - (703) 750-4285
- ZAYO COMMUNICATIONS - BRAD LEATHERMAN - (703) 928-0649
- FIBERLIGHT COMMUNICATIONS - PETE ZDEBSKI - (443) 509-4658
- MCI - ADAM RICE - (571) 220-8978
- COX COMMUNICATIONS - THOMAS PORTER - (703) 480-2815
- AT & T COMMUNICATIONS - CRYSTAL BALWINSKI - (703) 444-3060
- VERIZON - SCOTT SISK - (703) 694-6530

LEGEND

 Denotes Demolition of Pavement & Concrete

SCALE
0 25' 50'

PROJECT
0050-151-225

SHEET NO.
1G(1)

MATCHLINE SHEET 1G(2) - STA. 106+00.00

MATCHLINE SHEET 1G(2) - STA. 32+00.00

PROJECT MANAGER _ CHRISTINA ALEXANDER (CITY PM) (703) 385-7810
SURVEYED BY, DATE _ TIMMONS GROUP (804) 200-6500 8/2020 _ _ _
DESIGN BY _ TIMMONS GROUP (804) 200-6500
SUBSURFACE UTILITY BY, DATE TIMMONS GROUP (804) 200-6500 8/2020

RW PLANS

THESE PLANS ARE UNFINISHED AND
UNAPPROVED AND ARE NOT TO BE
USED FOR ANY TYPE OF
CONSTRUCTION.

DEMOLITION PLAN

REVISED	STATE	ROUTE	STATE PROJECT	SHEET NO.
	VA.	050	0050-151-225 P101	

DESIGN FEATURES RELATING TO CONSTRUCTION
OR TO REGULATION AND CONTROL OF TRAFFIC
MAY BE SUBJECT TO CHANGE AS DEEMED
NECESSARY BY THE DEPARTMENT

Timmons Group
Richmond, Virginia
ROADWAY ENGINEER

GLASCOCK & SONS, LP
PIN 57 2 02 014
0. 321 Ac.

GLASCOCK & SONS, LP
D.B. 9172, Pg. 571
PIN 57 2 02 015
0. 928 Ac.

LARRY C. MILLER
D.B. 16847, PG. 2034
PIN 57 2 02 073 A
1. 269 Ac.

UTILITY OWNERS:

- DOMINION POWER - CHRISTINE JULIANO - (703) 431-6559
- CITY OF FAIRFAX WATER - ROBERT COTTON -
RCOTTEN@FAIRFAXWATER.ORG
- WASHINGTON NATURAL GAS - ROGER GAULT - (703) 750-4285
- ZAYO COMMUNICATIONS - BRAD LEATHERMAN - (703) 928-0649
- FIBERLIGHT COMMUNICATIONS - PETE ZDEBSKI - (443) 509-4658
- MCI - ADAM RICE - (571) 220-8978
- COX COMMUNICATIONS - THOMAS PORTER - (703) 480-2815
- AT & T COMMUNICATIONS - CRYSTAL BALWINSKI - (703) 444-3060
- VERIZON - SCOTT SISK - (703) 694-6530

LEGEND

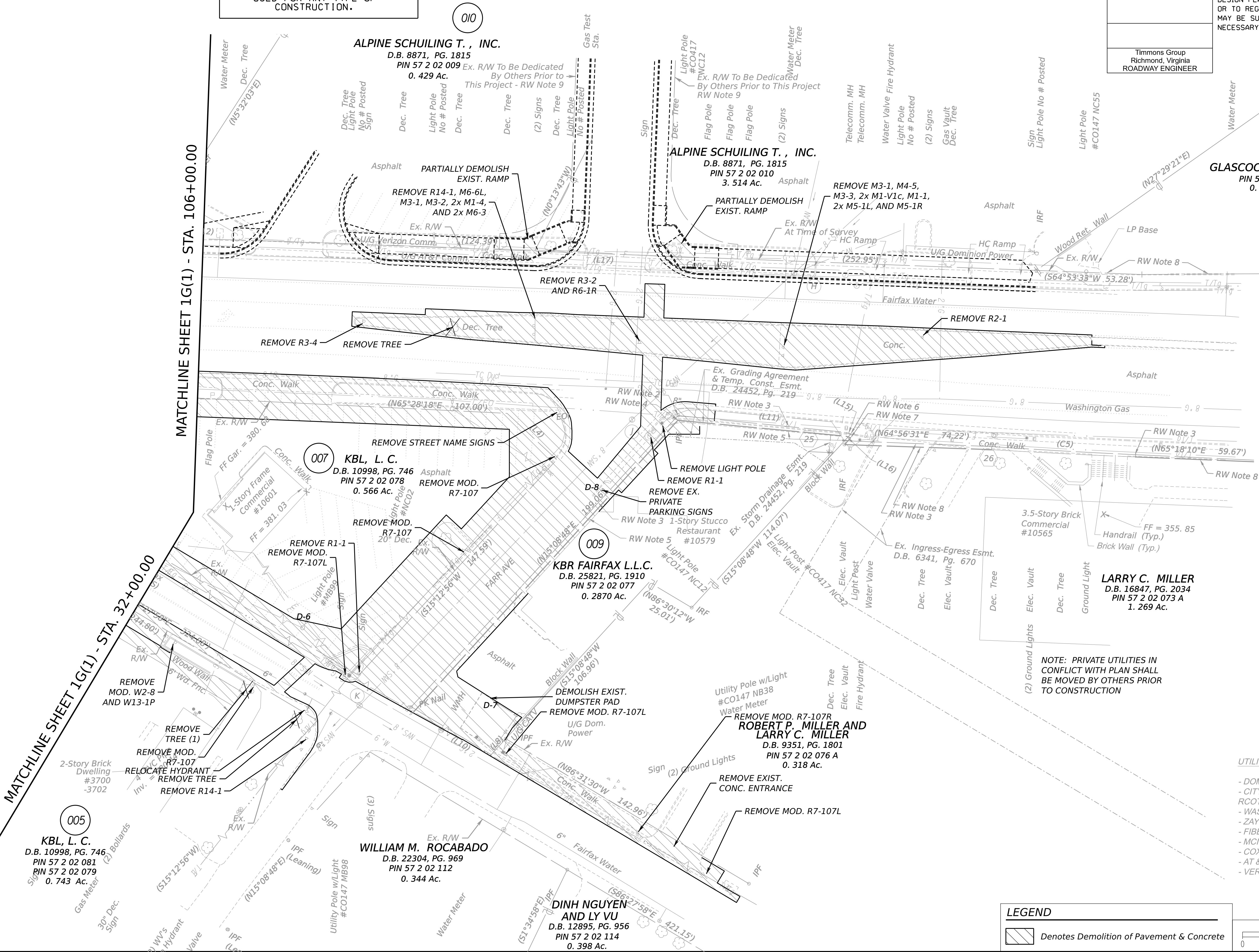
Denotes Demolition of Pavement & Concrete

SCALE

0 25' 50'

PROJECT
0050-151-225

SHEET NO.
1G(2)



PROJECT MANAGER _ _ CHRISTINA ALEXANDER (CITY PM) (703) 385-7810
SURVEYED BY, DATE _ _ TIMMONS GROUP (804) 200-6500 8/2020 _ _ _ _ _
DESIGN BY _ _ _ _ _ TIMMONS GROUP (804) 200-6500
SUBSURFACE UTILITY BY, DATE TIMMONS GROUP (804) 200-6500 8/2020

RW PLANS

THESE PLANS ARE UNFINISHED AND
UNAPPROVED AND ARE NOT TO BE
USED FOR ANY TYPE OF
CONSTRUCTION.

TRANSPORTATION MANAGEMENT PLAN

GENERAL

- This project is classified as Type A.
- The project length is approximately 0.20 miles along US Route 50 (Fairfax Boulevard) and various lengths to tie-in to existing conditions along McLean Avenue, Warwick Avenue, and Farr Avenue. The width of the work zone varies from 20' to 60', with the wider sections being in locations with full closures.
- The purpose of this project is to install a new signal at the intersection of Fairfax Boulevard and Farr Avenue and to replace the existing signal at the intersection of Fairfax Boulevard, Warwick Avenue, and McLean Avenue and reconfigure the various approaches to convert the six legged intersection to a four-legged intersection with two unsignalized right-in right-out intersections. Along Fairfax Boulevard, a shared use path will be installed and along all of the side streets sidewalk will be installed. New storm sewer facilities will be added to improve drainage in the project area.
- Traffic along these roads consists primarily of commuters and local residents with only 1% - 2% truck traffic.
- The existing speed limit for Fairfax Boulevard is 35 mph. The speed limit of all other streets is 25 mph. All existing speed limits shall be maintained during all phases of construction.

TEMPORARY TRAFFIC CONTROL (TTC) /
MAINTENANCE OF TRAFFIC (MOT)

- Lane closures and shoulder closures are anticipated for this project and will be in accordance with the Virginia Work Area Protection Manual, 2011 Edition - Revision 2.1. The following temporary traffic measures shall be used.
 - Stationary Operation on a Shoulder (Figure TTC-4.2)
 - Shoulder Operation with Minor Encroachment (Figure TTC-5.2)
 - Outside Lane Closure on a Four-Lane Roadway (Figure TTC-16.2)
 - Inside Lane Closure on a Four-Lane Roadway (Figure TTC-17.2)
 - Center Turn Lane Closure Operation (Figure TTC-21.1)
 - Turn Lane Closure Operation (Figure TTC-29.2)
 - Sidewalk Closure and Bypass Sidewalk Operations (Figure TTC-35.1)
 - Crosswalk Closure and Pedestrian Detour Operation (Figure TTC-36.2)
 - Road Closure Operation with a Detour (Figure TTC-48.2)
 - Signing for Project Limits (Figure TTC-53.0)
 - Eradication of Pavement Markings in a Work Zone (Figure TTC-55.1).
- All dimensions shown for sign placement shall be provided to the maximum extent practical as shown in the appropriate TTC figures. Should adjustments be required, the contractor shall obtain approval from the engineer prior to sign placement.
- Negative impacts to the traveling public shall be minimized in every way possible. As such, during peak times and holidays, all lanes of traffic shall be maintained in all directions with the exception of during full road closure operations (Phase 7), where road closures shall be per plan. See the "General Notes" portion of this plan sheet for more information.
- Access to all adjacent properties shall be maintained at all times. Contractor shall ensure a safe and well-defined access route is available to residents during road closure operations.

PUBLIC COMMUNICATION PLAN

- When any major traffic changes are to take place (detours, lane closures, etc.), the contractor shall ensure that the local newspapers and radio stations are informed 72 hours in advance of the change.
- Portable changeable message signs (PCMS) shall be used to notify the traveling public of any such major traffic changes 72 hours in advance of the change. PCMS shall remain in place 48 hours after change is implemented.

TRANSPORTATION OPERATION PLAN

- The contractor shall inform the "Northern Region Operation Traffic Operations Center" (NROTOC) when an impact to the existing traffic pattern is implemented, (such as a lane closure or a road closure/detour) and again when it is removed. The RTOC will in turn place the information into the "511 VIRGINIA" traffic alert system (a service of the Virginia Department of Transportation Traffic System). The contractor shall be responsible for updating the Lane Closure Advisory Management System (LCAMS) for all lane closures.
- The contractor shall use the VDOT LCAMS (Lane Closure Advisory Management System) for scheduling lane closures. The contractor shall input planned lane closures for the upcoming week into LCAMS and submit (email/fax) the LCAMS ticket number to the area construction engineer and project personnel by 12:00 PM on Tuesday of the week prior to planned lane closure operations.
- In case of emergency, call 911.

The following is a list of contact numbers:

Fire: 703-385-7940
City of Fairfax Police: 703-385-7940
State Police: 703-803-2660
Engineer Contact: Nick Soucie, Timmons Group: 804-200-6431
Northern Regional Traffic Operations Center: 703-554-6712
Public Affairs: Jenni McCord, 703-259-1779
VDOT Northern Virginia Distrct: 800-367-7623
District Work Zone Safety Coordination: Brian Fry, 703-259-2394
City of Fairfax: Wendy Sanford, Transportation Director 703-385-7889

- Any traffic incident that occurs during the life of this project will be discussed by the contractor, VDOT personnel (as required), and the city project personnel to determine whether any changes need to be made to the traffic control on the project.

GENERAL NOTES

- Any required lane and/or road closures must be approved in advance by the City of Fairfax Transportation Department.
- Traffic shall not be stopped on Fairfax Boulevard (Route 29) or any side streets for longer than five minutes at any time unless otherwise approved by the city.
- All areas excavated deeper than two inches (2") below existing pavement surface and within the clear zone, at the conclusion of each workday, shall be backfilled to form an approximate 6:1 wedge against the pavement surface for the safety and protection of vehicular traffic. All cost for placing, maintaining, and removing the 6:1 wedge shall be included in the price bid for other items in the contract and no additional compensation will be allowed.
- Lane closures will not be permitted on holidays or weekends unless otherwise approved in advanced by the Director of Public Works.
- Any contract item(s) not specifically noted in the Maintenance of Traffic may be scheduled for construction at the contractor's option, as approved by the Engineer, the City and VDOT.
- Vehicular and pedestrian access to adjacent properties and connecting streets shall be maintained at all times during construction. Property owners shall be notified a minimum of 48 hours prior to any activities which would impede access to their property. In all cases in which existing or established traffic patterns will be disturbed, the contractor will notify all affected residents and/or businesses a minimum of 48 hours in advance of the anticipated disruption by distributing door-to-door notices. A copy of the notice shall be forwarded to the project engineer, the city, and/or VDOT for review and approval prior to the beginning of work.
- The final surface course is not to be placed until such time permanent pavement markings can be placed.
- All traffic control shall be set up and spaced according to the Virginia Work Area Protection Manual, 2011 Edition - Revision 2.1.
- The Contractor shall provide additional traffic control as directed by the city and/or VDOT, should field conditions warrant.
- The Contractor shall maintain minimum lane widths of 10' during construction. Any temporary pavement markings that are required are the responsibility of the Contractor.
- The Contractor is responsible for placement and maintenance of all temporary pavement markings that are required or implied in the construction sequencing. The Contractor is responsible for providing all traffic control devices, signage, equipment, personnel, including certified traffic-control personnel, etc. to control traffic during construction within VDOT maintained Right-of-Way. All traffic control shall be in strict accordance with the standards, guidelines, policies, and objectives of the latest edition of the Virginia Work Area Protection Manual, Manual for Uniform Traffic Control Devices (MUTCD), and all city or VDOT permits.
- At no time shall construction take place on both the right and left sides of vehicles unless specified by the city and/or VDOT.
- All construction materials and equipment shall be stored off-site or outside of Fairfax Boulevard and side street clear zone/sight distance restrictive areas.
- Emergency vehicle, bus (including Metrobus routes), and mail routes shall be maintained at all times.

SEQUENCE OF CONSTRUCTION

The following sequence of construction is a recommendation provided by the engineer. The contractor shall be responsible for obtaining approval from the city and/or VDOT for any changes to this plan resulting from adjustments to the recommended sequencing. All phases of construction shall be in accordance with the erosion and sediment control plans provided in this plan set. The contractor may elect to combine phases with prior approval from the city and/or VDOT. Pedestrian access shall be maintained through TTC 35.2 and TTC 36.1, as prescribed in the general notes through the use of Group II channelizing devices and proper signage.

- Phase 1 Construction consists of median work along Fairfax Boulevard to replace the existing median with asphalt and install proposed median curb east of Farr Avenue, and installation of signal equipment and curb ramps on the north side of Fairfax Boulevard. A storm sewer crossing under Fairfax Boulevard will be installed during this phase.

Traffic shall be maintained according to TTC-4.2 and/or TTC-5.2 and TTC-21.1, as prescribed in the general notes through the use of Group II channelizing devices and proper signage. As necessary, the contractor shall also utilize TTC-16.2 and TTC-17.2 for short durations during installation of storm sewer crossings.

- Phase 2 Construction consists of work on the southeast corner of Fairfax Boulevard and Farr Avenue, the east side of Farr Avenue, and the north side of Warwick Avenue east of Farr Avenue, including traffic signal equipment and storm sewer improvements. Farr Avenue northbound will be closed but the southbound direction of traffic and all access points must be maintained at all times.

Traffic shall be maintained according to TTC-4.2 and/or TTC-5.2 and TTC-21.1, as prescribed in the general notes through the use of Group II channelizing devices and proper signage. As necessary, the contractor may also utilize TTC-16.2 outside of peak hours.

	REVISED	STATE	STATE		SHEET NO.
		ROUTE	PROJECT		
		VA.	050	0050-151-225 P101	
	DESIGN FEATURES RELATING TO CONSTRUCTION OR TO REGULATION AND CONTROL OF TRAFFIC MAY BE SUBJECT TO CHANGE AS DEEMED NECESSARY BY THE DEPARTMENT				
	Timmons Group Richmond, Virginia ROADWAY ENGINEER				

SEQUENCE OF CONSTRUCTION (Cont'd)

- Phase 3 Construction consists of work on the west side of Farr Avenue, including traffic signal equipment and storm sewer improvements. Farr Avenue northbound will be closed but the southbound direction of traffic and all access points must be maintained at all times. Upon completion of the phase, the signal shall be activated.

Traffic shall be maintained according to TTC-4.2 and/or TTC-5.2 and TTC-21.1, as prescribed in the general notes through the use of Group II channelizing devices and proper signage. As necessary, the contractor may also utilize TTC-16.2 outside of peak hours.

- Phase 4 Construction consists of work on the north side of Warwick Avenue south of Fairfax Boulevard and along the south side of Fairfax Boulevard, and on the southwest corner of the intersection of Fairfax Boulevard, McLean Avenue, and Warwick Avenue. Warwick Avenue northbound will be closed but the southbound direction of traffic and all access points must be maintained at all times. The signal heads for Warwick Avenue northbound shall be bagged.

Traffic shall be maintained according to TTC-4.2 and/or TTC-5.2, as prescribed in the general notes through the use of Group II channelizing devices and proper signage. As necessary, the contractor may also utilize TTC-16.2 outside of peak hours.

- Phase 5 Construction consists of work on the south side of Fairfax Boulevard and the south side of Warwick Avenue. Warwick Avenue northbound will be closed but the southbound direction of traffic and all access points must be maintained at all times. See sheet 1H(2A) for a recommended detour to complete work along McLean Avenue.

Traffic shall be maintained according to TTC-4.2 and/or TTC-5.2, as prescribed in the general notes through the use of Group II channelizing devices and proper signage. As necessary, the contractor may also utilize TTC-16.2 outside of peak hours.

- Phase 6 Construction consists of work on the northwest corner of Fairfax Boulevard, McLean Avenue, and Warwick Avenue. Work shall install as much new pavement as possible without impacting existing signal equipment.

Traffic shall be maintained according to TTC-4.2 and/or TTC-5.2, as prescribed in the general notes through the use of Group II channelizing devices and proper signage. As necessary, the contractor may also utilize TTC-16.2 outside of peak hours.

- Phase 7 Construction consists of work on the northern leg of McLean Avenue. A full detour of McLean Avenue is anticipated for this phase per sheet 1H(2B). Upon completion of the detour, the proposed signal shall be activated and existing signal equipment shall be removed. Final tie-in work at the northwest corner of Fairfax Boulevard, McLean Avenue, and Warwick Avenue shall occur at this point. See sheet 1H(2B) for a recommended detour to complete work along McLean Avenue.

Traffic shall be maintained according to TTC-4.2 and/or TTC-5.2, as prescribed in the general notes through the use of Group II channelizing devices and proper signage. As necessary, the contractor may also utilize TTC-16.2 outside of peak hours.

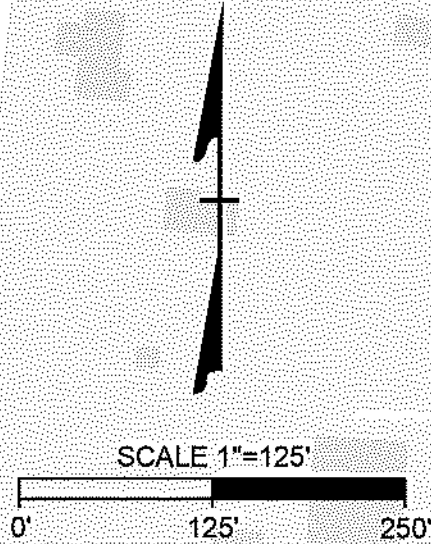
- Phase 8 Construction consists of Fairfax Boulevard median work between the two signals, including installation of curb and pavement markings. At the end of the phase, the final pavement surface and all permanent pavement markings and signage shall be in place.

Traffic shall be maintained according to TTC-4.2 and/or TTC-5.2 and TTC-21.1, as prescribed in the general notes through the use of Group II channelizing devices and proper signage. As necessary, the contractor may also utilize TTC-17.2 outside of peak hours.

PROJECT MANAGER _ CHRISTINA ALEXANDER (CITY PM) (703) 385-7810
SURVEYED BY, DATE _ TIMMONS GROUP (804) 200-6500 8/2020 _
DESIGN BY _ TIMMONS GROUP (804) 200-6500
SUBSURFACE UTILITY BY, DATE TIMMONS GROUP (804) 200-6500 8/2020

RW PLANS

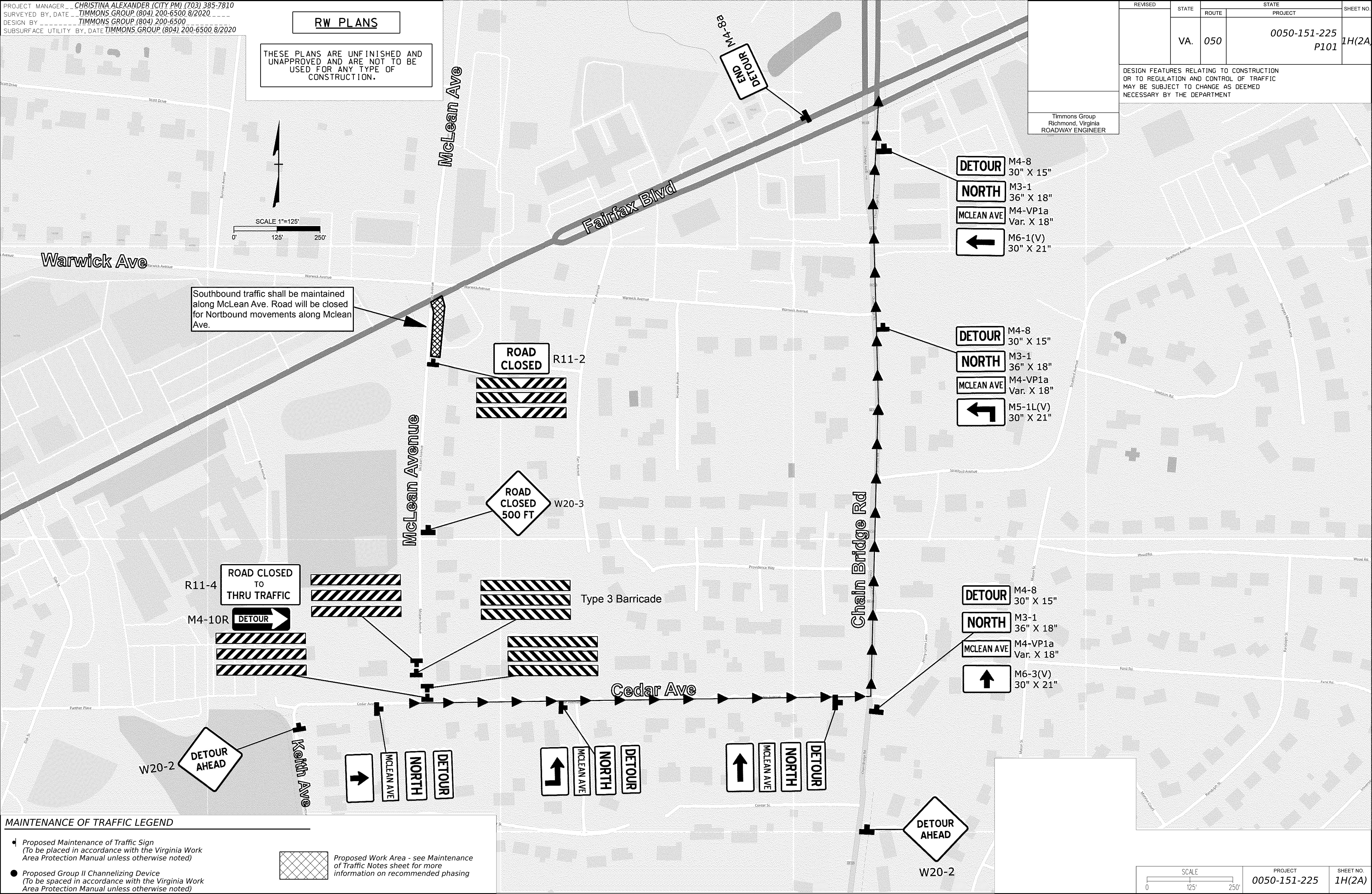
THESE PLANS ARE UNFINISHED AND UNAPPROVED AND ARE NOT TO BE USED FOR ANY TYPE OF CONSTRUCTION.



REVISED	STATE	ROUTE	STATE PROJECT	SHEET NO.
	VA.	050	0050-151-225 P101	

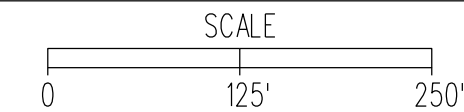
DESIGN FEATURES RELATING TO CONSTRUCTION OR TO REGULATION AND CONTROL OF TRAFFIC MAY BE SUBJECT TO CHANGE AS DEEMED NECESSARY BY THE DEPARTMENT

Timmons Group
Richmond, Virginia
ROADWAY ENGINEER



MAINTENANCE OF TRAFFIC LEGEND

- Proposed Maintenance of Traffic Sign
(To be placed in accordance with the Virginia Work Area Protection Manual unless otherwise noted)
 - Proposed Group II Channelizing Device
(To be spaced in accordance with the Virginia Work Area Protection Manual unless otherwise noted)
- Proposed Work Area - see Maintenance of Traffic Notes sheet for more information on recommended phasing

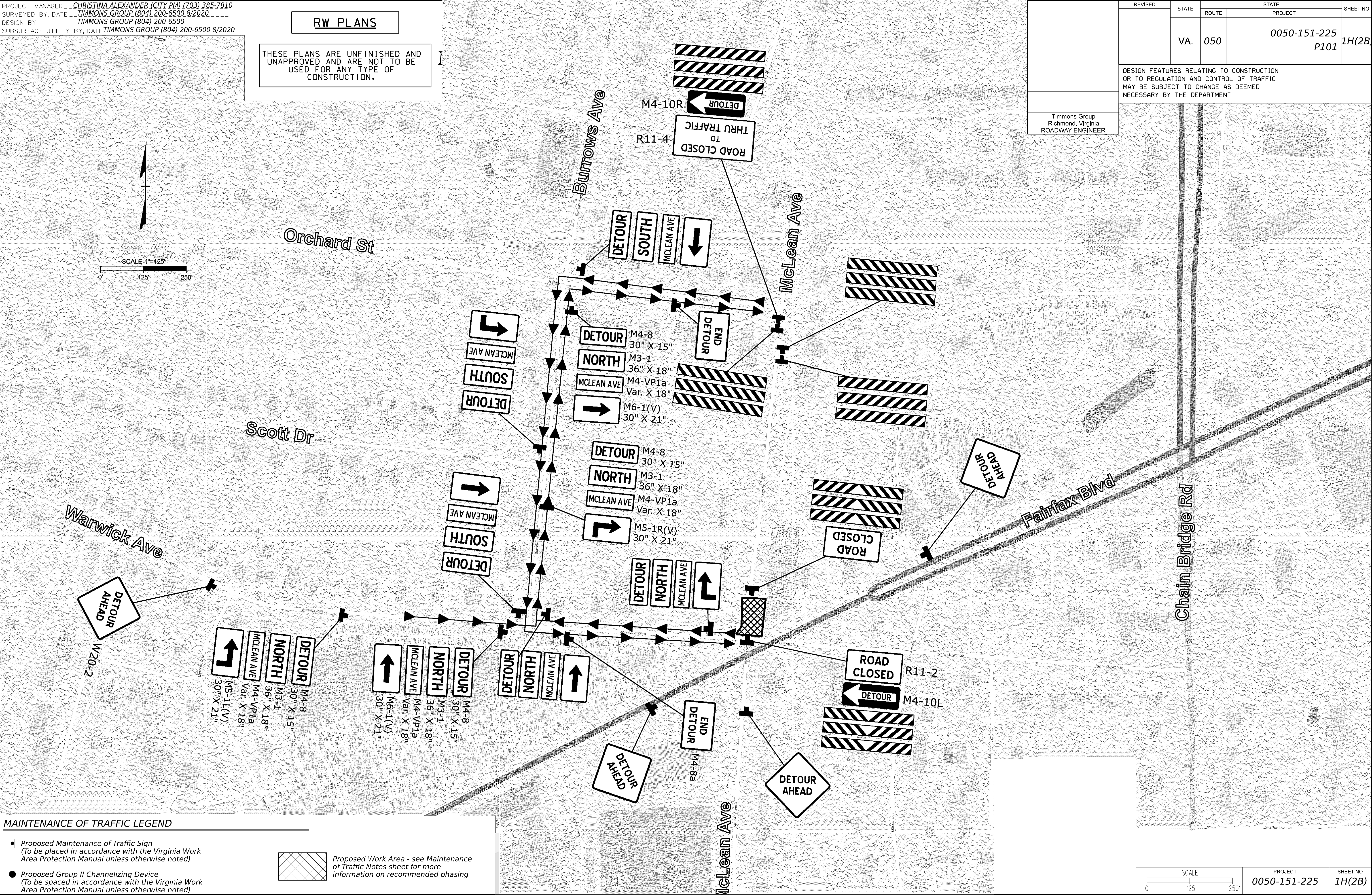
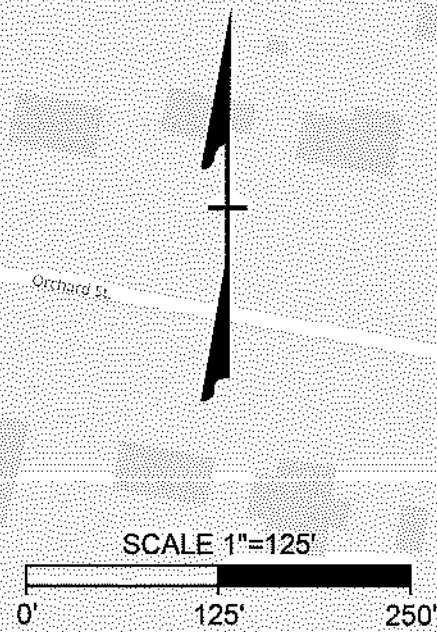


PROJECT	SHEET NO.
0050-151-225	1H(2A)

PROJECT MANAGER _ CHRISTINA ALEXANDER (CITY PM) (703) 385-7810
SURVEYED BY, DATE _ TIMMONS GROUP (804) 200-6500 8/2020 _
DESIGN BY _ TIMMONS GROUP (804) 200-6500
SUBSURFACE UTILITY BY, DATE TIMMONS GROUP (804) 200-6500 8/2020

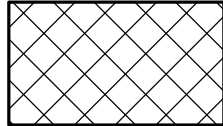
RW PLANS

THESE PLANS ARE UNFINISHED AND
UNAPPROVED AND ARE NOT TO BE
USED FOR ANY TYPE OF
CONSTRUCTION.



MAINTENANCE OF TRAFFIC LEGEND

- Proposed Maintenance of Traffic Sign
(To be placed in accordance with the Virginia Work Area Protection Manual unless otherwise noted)
- Proposed Group II Channelizing Device
(To be spaced in accordance with the Virginia Work Area Protection Manual unless otherwise noted)

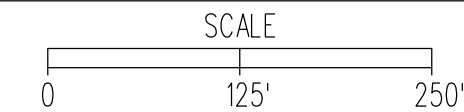


Proposed Work Area - see Maintenance of Traffic Notes sheet for more information on recommended phasing

REVISED	STATE	ROUTE	STATE PROJECT	SHEET NO.
	VA.	050	0050-151-225 P101	

DESIGN FEATURES RELATING TO CONSTRUCTION OR TO REGULATION AND CONTROL OF TRAFFIC MAY BE SUBJECT TO CHANGE AS DEEMED NECESSARY BY THE DEPARTMENT

Timmons Group
Richmond, Virginia
ROADWAY ENGINEER



PROJECT
0050-151-225

SHEET NO.
1H(2B)

PROJECT MANAGER _ CHRISTINA ALEXANDER (CITY PM) (703) 385-7810
SURVEYED BY, DATE _ TIMMONS GROUP (804) 200-6500 8/2020 _
DESIGN BY _ TIMMONS GROUP (804) 200-6500
SUBSURFACE UTILITY BY, DATE TIMMONS GROUP (804) 200-6500 8/2020

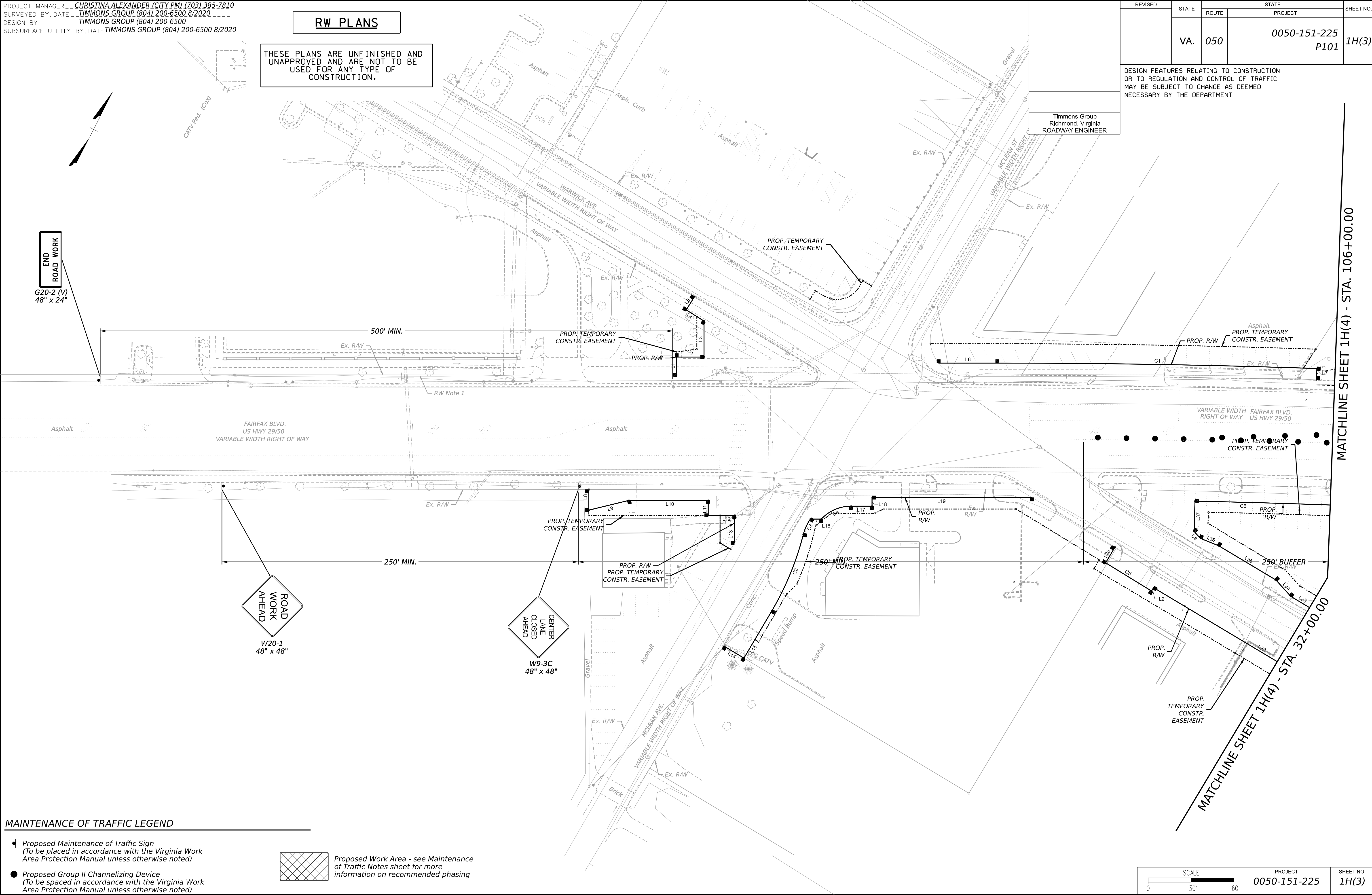
RW PLANS

THESE PLANS ARE UNFINISHED AND
UNAPPROVED AND ARE NOT TO BE
USED FOR ANY TYPE OF
CONSTRUCTION.

REVISED	STATE	ROUTE	STATE PROJECT	SHEET NO.
	VA.	050	0050-151-225 P101	

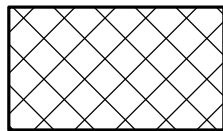
DESIGN FEATURES RELATING TO CONSTRUCTION
OR TO REGULATION AND CONTROL OF TRAFFIC
MAY BE SUBJECT TO CHANGE AS DEEMED
NECESSARY BY THE DEPARTMENT

Timmons Group
Richmond, Virginia
ROADWAY ENGINEER

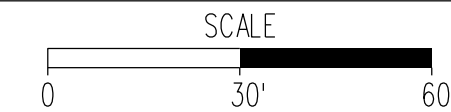


MAINTENANCE OF TRAFFIC LEGEND

- Proposed Maintenance of Traffic Sign
(To be placed in accordance with the Virginia Work Area Protection Manual unless otherwise noted)
- Proposed Group II Channelizing Device
(To be spaced in accordance with the Virginia Work Area Protection Manual unless otherwise noted)



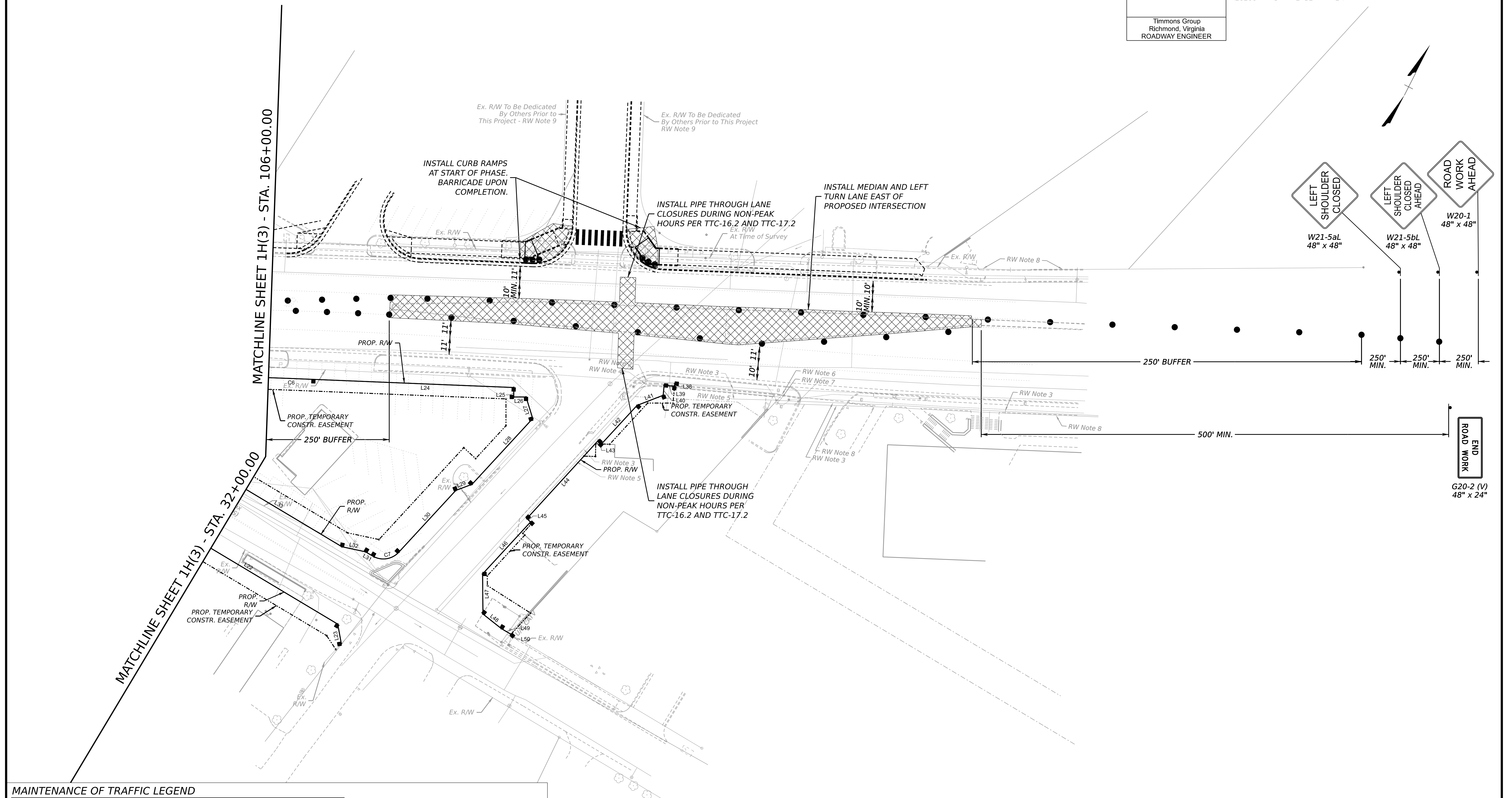
Proposed Work Area - see Maintenance
of Traffic Notes sheet for more
information on recommended phasing



PROJECT
0050-151-225

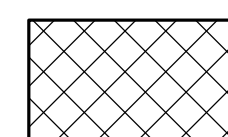
SHEET NO.
1H(3)

Timmons Group
Richmond, Virginia
ROADWAY ENGINEER

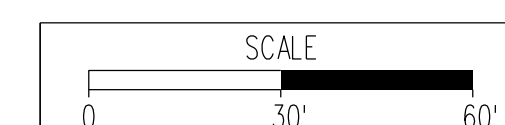


MAINTENANCE OF TRAFFIC LEGEND

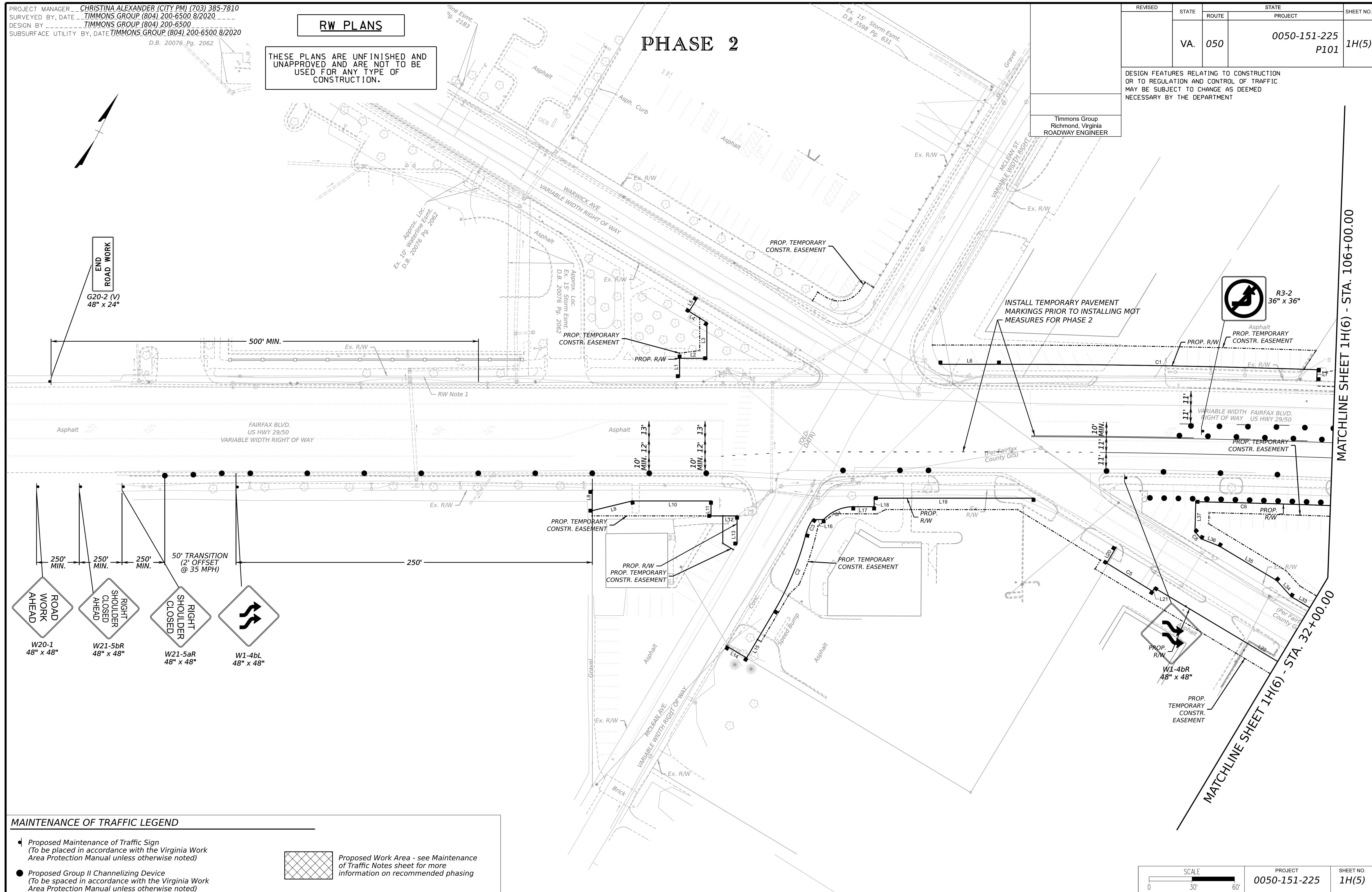
- *Proposed Maintenance of Traffic Sign
(To be placed in accordance with the Virginia Work
Area Protection Manual unless otherwise noted)*
- *Proposed Group II Channelizing Device
(To be spaced in accordance with the Virginia Work
Area Protection Manual unless otherwise noted)*



Proposed Work Area - see Maintenance of Traffic Notes sheet for more information on recommended phasing



PROJECT 0050-151-225	SHEET NO. 1H(4)
--------------------------------	---------------------------



PROJECT MANAGER _ CHRISTINA ALEXANDER (CITY PM) (703) 385-7810
SURVEYED BY, DATE _ TIMMONS GROUP (804) 200-6500 8/2020 _ _ _ _ _
DESIGN BY _ _ _ _ _ TIMMONS GROUP (804) 200-6500
SUBSURFACE UTILITY BY, DATE TIMMONS GROUP (804) 200-6500 8/2020

RW PLANS

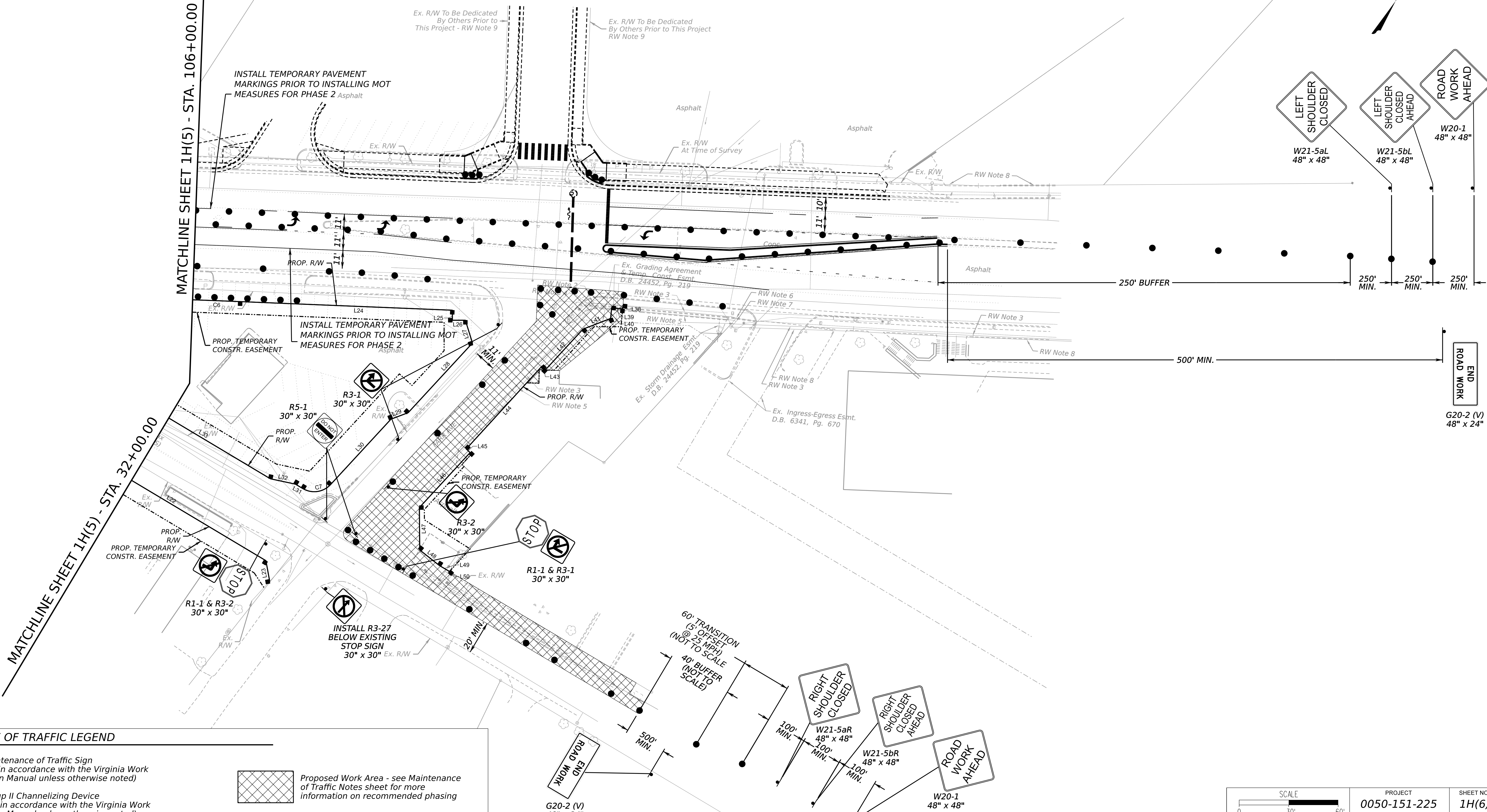
THESE PLANS ARE UNFINISHED AND UNAPPROVED AND ARE NOT TO BE USED FOR ANY TYPE OF CONSTRUCTION.

PHASE 2

REVISED	STATE	ROUTE	STATE PROJECT	SHEET NO.
	VA.	050	0050-151-225 P101	

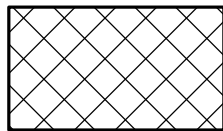
DESIGN FEATURES RELATING TO CONSTRUCTION OR TO REGULATION AND CONTROL OF TRAFFIC MAY BE SUBJECT TO CHANGE AS DEEMED NECESSARY BY THE DEPARTMENT

Timmons Group
Richmond, Virginia
ROADWAY ENGINEER

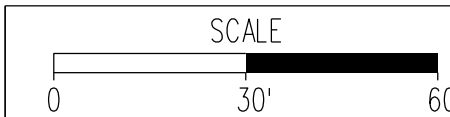


MAINTENANCE OF TRAFFIC LEGEND

- Proposed Maintenance of Traffic Sign
(To be placed in accordance with the Virginia Work Area Protection Manual unless otherwise noted)
- Proposed Group II Channelizing Device
(To be spaced in accordance with the Virginia Work Area Protection Manual unless otherwise noted)



Proposed Work Area - see Maintenance of Traffic Notes sheet for more information on recommended phasing



PROJECT
0050-151-225

SHEET NO.
1H(6)

PROJECT 0050-151-225	SHEET NO. 1H(7)
--------------------------------	---------------------------